

Superchips

2010 CATALOG



Cortex®
Vehicle Performance Programmer



Flashpaq®
Vehicle Performance Programmer



Jeep® Flashpaq
Vehicle Performance Programmer



Mileage Xs®
Vehicle Economy Programmer

LET'S GET THE FACTS OUT IN THE OPEN –

A Superchips programmer gives you more performance per dollar than any hard part you might consider for your late-model vehicle. We're not against hard parts such as cold-air intake systems and low-restriction exhaust systems...in fact our programmers (a.k.a. tuners) work great with most of these. But numbers are numbers, and Superchips programmers deliver more horsepower per dollar.

Since the early 1980s, vehicles have been equipped with engine control management systems, a.k.a. computers. The engineers at the automaker have a lot on their minds when they create the calibration for a new vehicle. Believe it or not, maximum horsepower and torque are rarely part of the equation. Sure, they want good horsepower and torque numbers, but they have to calibrate for the least-common denominator, not for the performance enthusiasts. Good enough, is...well...good enough.

This leaves a lot of power on the table that Superchips can deliver without exchanging a single part on your car or truck. We can also deliver fuel savings, if that's what's most important to you. And the ability to switch back and forth as you want.

And, we know all the tricks too. In addition to optimizing fuel and ignition curves for maximum power and improved fuel economy, our programmers offer a variety of features. Try these on for size:

- Advanced transmission tuning features*
- Raise vehicle top-speed limiter**
- Recalibrate the speedometer after tire-diameter or axle-gear changes
- Performance data logging
- Adjusting cooling fan operation
- Raising engine max rpm
- Be able to select the Jeep Rubicon lockers in HI range

A programmer is the secret to unlocking the performance potential of your vehicle. Are you ready for Superchips?

TABLE OF CONTENTS

Get The Facts	2	Track Speed Spotlight.....	14
The World's Best Selling Programmer.....	3	Performance Truck	16
Mad Science	4	CARB/EPA.....	18
Why Superchips	5	Warranty.....	19
Flashpaq.....	6	Frequently Asked Questions	20
Flashpaq for Jeep.....	7		
Cortex.....	8	Programmer Options Reference Guide.....	22
Mileage XS	9	Jeep Options Reference Guide.	31
Towing Spotlight	10		
Off-Road Spotlight.....	12		

* Not all features are available on every make, model and engine. Ask your local MVP dealer or contact Superchips Customer Care if you have any questions.

**For use only on controlled track. Never exceed legal limit on public roadways.

WHAT MAKES SUPERCHIPS THE WORLD'S BEST-SELLING BRAND IN THE BUSINESS?

Just two things: its products and its people. With over 26 years of expertise, Superchips delivers quality solutions for people looking for more power, more fuel economy and a variety of customizable features.

Full-line Leverage with Niche Expertise

One size does not fit all, and we create "tunes" – tailored calibrations – for each niche as if all we did was work on that one type of vehicle. But since we work on many types, we're able to apply benefits that we find from our experience on other vehicles, too. For example, we have a team working to pump up the power on Dodge Cummins trucks and a different team crafting the latest "tune" for Ford Mustangs. They share ideas and passion for great products, but they know the vehicles they work on and the customers who own them better than anyone.

More Power Every Day

We believe in giving you more power throughout the driving range. Some companies only pump up the power at full-throttle because that's much quicker and easier for them than working tirelessly on all of the points through the throttle position and engine RPM range. But this is a key Superchips difference you'll feel when using one of our "tunes."

More Features

Our full-line of programmers offer the power and fuel economy you expect, with quality and execution that will impress you. The hand-held units are easy to use and – depending on whether you use a Flashpaq, Cortex or Mileage XS – they come with a host of additional features. The ability to read and reset diagnostic trouble codes without a trip to the dealer. The power to alter the shift characteristics of your automatic transmission to meet your tastes. The programmer can also display acceleration data and more than a dozen sensor readings in real time. And the ability to recalibrate the speedometer after you've changed tire diameter or axle gear ratio.

Unmatched Quality

Not all power is created equally. We use rear-wheel dyno testing to develop and validate all of our power gains. Beware of companies touting "flywheel" dyno numbers – these are tests of the engine only, and don't take into account the rest of the vehicle. The last time we checked, it's the whole vehicle you're interested in driving, not just the engine. Power delivered to the ground through the tires is much more important. We also spend quite a bit of time tuning the automatic transmission shift characteristics. This doesn't show up as horsepower gain, but you will feel the difference.

More Flexibility

All of our programmers grow with you. First, they will work with the most popular performance parts including most cold-air intakes, free-flowing exhaust systems and some aftermarket throttle bodies. Superchips also offers free updates over the internet so you can always have the latest tune for your vehicle, and we even offer an upgrade program that gives you a discount if you decide to upgrade to the next level programmer at a later date.

Try Superchips and find out why our customers say they would buy from Superchips again or recommend us to a friend.

MAD SCIENCE

It's a power thing – wanna get in on the secret?

Superchips programmers are all about squeezing the most power out of your engine and making it work in your vehicle. We have engineering teams that adjust all of the elements that affect vehicle power: air/fuel ratio, fuel injector flow rates and spark timing. We also tune shift characteristics of an automatic transmission for maximum acceleration and seat of the pants performance feel.

EASY PERFORMANCE!

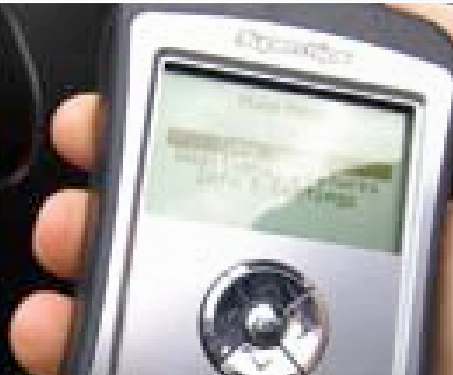
STEP 1

Plug your Programmer into the vehicle's diagnostic OBD-II Port.



STEP 2

Answer a few simple questions about your vehicle.



STEP 3

The program is downloaded and you're ready to go!



Thirty years ago, these results would have required re-jetting a carburetor, reworking the spark advance on the distributor and installing a transmission shift-improvement kit. Today, it's knowing how to read fuel, spark and shift maps, knowing exactly where to push the limits and testing, testing, testing.

When you purchase a Superchips programmer, you're actually purchasing all of the expertise that went into the tune, or new calibration, that'll deliver performance that makes you scream! The programmer downloads the tune to your vehicle's computer, and stores the original calibration in case you ever want to go back, and we're betting that you won't.

There are several key factors to creating a tune for your vehicle. First, it has to maximize power without causing you headaches. That means no broken parts caused by the increased power. One of the measurements we use in our testing is Exhaust Gas Temperature (EGT). This is especially critical in turbo diesel applications. It's easy to create really impressive power increases in these applications, but a skyrocketing EGT is going to lead to broken engine parts, no questions asked.

**SUPERCHIPS DELIVERS
AMAZING PERFORMANCE WITHOUT
SACRIFICING DURABILITY**

Not all features are available on every make, model and engine. Ask your local MVP dealer or contact Superchips Customer Care if you have any questions.

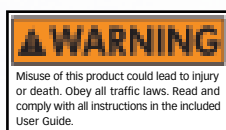
POWER PLAY

Your vehicle deserves the best. All we do is performance programmers whether for the street, track or trail uses. So that means we spend every minute of every day making sure we're pumping up the action for your machine. Solutions that give you tire-smoking acceleration, more towing power for work or play, fuel-sipping economy and above all, bang for your buck.

Our products are easy to use and easy to choose – Here's a quick overview of our models:

- Our ace programmer, the **Cortex**, is still the meanest street-legal programmer you can buy with an industry-first two-year powertrain warranty. In addition to brain-numbing power increases, Cortex lets you adjust transmission shifts, move the engine rev limiter and change the speedometer calibration. You can also view a ton of stats like how fast your vehicle is smokin' down the ¼-mile.
- For in-the-know power people, the legendary **Flashpaq** programmer delivers multiple power levels and a variety of user-tunable options. If you're burning gasoline, Flashpaq gives you dyno-proven power for either 87- or 91-octane. Diesel burners can choose from max-performance, towing or economy programs.
- **Mileage XS** is all about squeezing every last bit of energy out of a gallon of fuel for improved mileage. By tuning your vehicle's fuel injection, ignition and transmission shift characteristics, the Superchips Mileage XS can deliver up to a 20-percent improvement in fuel economy for diesel pickups, and 10-percent for gasoline-powered trucks and SUVs.

Our newest product is for the hardcore rock crawler. The Superchips **Jeep Flashpaq** delivers more power and better fuel economy, and it gives you a list of features that no other company in the industry can match. Features real off-roaders can use, like Real-time Idle Up to run on-board welders and to speed up air-compressor work, control over the tire pressure monitoring system to avoid the annoying alarm when you air down, the ability to use your Rubicon's lockers in 4-HI and a Crawling Tune off-road throttle-response calibration for more control in 4-LO. This thing rocks!



Not all features are available on every make, model and engine. Ask your local MVP dealer or contact Superchips Customer Care if you have any questions.

At Superchips, we don't stand still, and neither do our customers. Read on to learn exactly what solutions Superchips programmers offer for your car or truck.

The helpful icons below will let you know at a glance all of the features a Superchips programmer has to offer.



Towing Power

Towing tune that is dyno and real-world tested for an optimized towing experience.



Off-Road Control

Vehicle control features and powertrain tunes designed specifically for off-road use.



Track Speed

Performance tune(s) that are dyno and real-world tested for a seat-of-your-pants driving experience.



Fuel Economy

Fuel economy specific tune that contributes to lowering the cost of owning a vehicle.



Speedometer Calibration

Electronically correct speedometer, odometer and shift points for non-factor tire and gear sizes.



Internet Updates

Update the programmer over the internet with the latest performance, economy, safety and programmer firmware updates.



Engine Diagnostics

Read and clear engine trouble codes.



Powertrain Warranty

A 2-year limited powertrain warranty included with Cortex.



Upgradeable

Upgrade is available to a full-featured Flashpaq performance programmer.

Towing
PowerTrack
SpeedFuel
EconomySpeedometer
CalibrationEngine
DiagnosticsInternet
Updates

THE MOST BANG FOR YOUR BUCK

Choose from multiple power levels and a variety of user-tunable options. If you're burning gasoline, Flashpaq gives you dyno-proven power for either 87- or 91-octane, so you can choose according to your need for speed or your gas-card balance. Diesel burners can choose from max-performance, towing or economy programs. Tire smoking comes standard for all makes and models. There's no hard part in the business that will give you more power per dollar. But if you like hard parts, Flashpaq is friendly with almost every cold-air intake package, low-restriction exhaust system and even some aftermarket throttle bodies.

Superchips Flashpaq is the number one selling programmer, period. Find out why the majority of our customers say they would buy from Superchips again or recommend us to a friend.



CHECK OUT THESE MUST-HAVE FEATURES THAT YOU'LL FIND IN A FLASHPAQ PROGRAMMER:

Tuning across the entire RPM range - provides greater increases in horsepower, torque and improved drivability

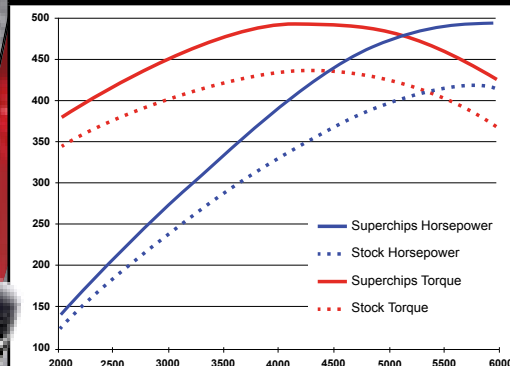
Calibrate speedometer, odometer and shift points for wheel, tire and gear size changes for optimum performance

Improved shift points, shift firmness and adjust vehicle speed limiter and engine rev limiter*

*Advanced transmission tuning features including manual adjusting of the normal driving shift schedule, 4x4 shift schedule and over-drive off shift schedule**

Data Acquisition information hub - in-cabin vehicle performance monitor with real-time sensor monitoring capabilities and vehicle performance stats like 1/4 mile and 0 - 60 MPH times

**2007 - 2010 Mustang GT500 5.4L V8 Manual
Superchips Performance Tune**



Max HP gain is 53 hp @ 5950 rpm
Max Torque gain is 35 lb-ft @ 4600 rpm

NOW AVAILABLE FOR FORD, GM, CHRYSLER, DODGE AND NISSAN.

* For use only on controlled track. Never exceed legal limit on public roadways. Not all features are available on every make, model and engine. Ask your local MVP dealer or contact Superchips Customer Care if you have any questions.



**POWER &
OFF-ROAD
FEATURES
INCLUDED**



Off-Road
Control



Track
Speed



Towing
Power



Fuel
Economy



Speedometer
Calibration



Engine
Diagnostics



Internet
Updates

AUTHENTIC FEATURES FOR AUTHENTIC JEEP VEHICLES

Superchips puts the mojo in your machine with features that will give you a leg up off-road, as well as put a smile on your face during your daily commute. Owning a Jeep is all about freedom and capability, and Superchips is the solution to give your Jeep ample amounts of both.

And that's in addition to more power and transmission shift optimization to turn those big mud-terrain tires, and the ability to recalibrate your speedometer after changing tire size or gear ratios.

At Superchips, we don't just get it, we live it. That's why we're not satisfied with just handing you the same tune that we give to Mustang or Duramax owner. Our Jeep tune is designed for how you use your 4x4, and packed with features that will keep you in the game.



Note: Consult your vehicle owner's manual and tire manufacturer for the appropriate operating pressure for your tires and load.

**CHECK OUT THESE MUST-HAVE OFF-ROAD
FEATURES THAT YOU'LL FIND ONLY IN A
JEEP FLASHPAQ PROGRAMMER:**

Real-time Idle Up to run on-board welders, speed up air-compressor work and provide full-juice to your winch

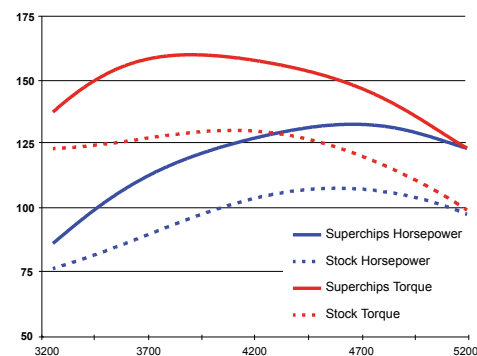
Tire pressure monitoring system – lower the setting for off-road use to avoid the annoying alarm

More control over your Rubicon lockers – use them in 4-HI

Run cooler with the ability turn the electric fan on at lower engine temperatures

Crawling Tune off-road throttle-response calibration for more control in 4-LO

**1998 – 2006 Jeep Wrangler Rubicon 4.0L
Superchips Performance Tune**



Max HP gain is 24 hp @ 4650 rpm
Max Torque gain is 28.44 lb-ft @ 4000 rpm

ONLY SUPERCHIPS DELIVERS ALL OF THESE OFF-ROAD FEATURES.

Not all features are available on every make, model and engine. Ask your local MVP dealer or contact Superchips Customer Care if you have any questions.

CORTEX



Towing Power



Track Speed



Fuel Economy



Internet Updates



Engine Diagnostics



Powertrain Warranty

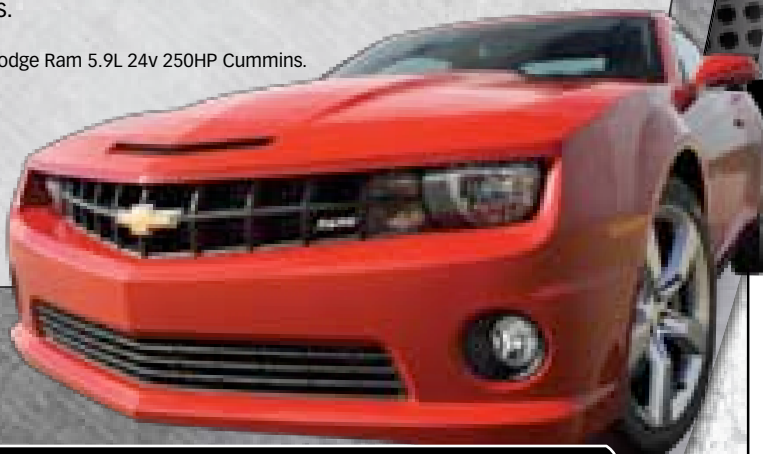
BIG MAN ON CAMPUS

Superchips Cortex is the programmer your mother warned you about. It kicks sand and takes the girl, and if you're not ready for seat-cover-sucking power, then turn tail and run. Simply stated, Cortex from Superchips is the best street-legal programmer you can buy with an industry-first two-year powertrain warranty.

Cortex pumps up the performance by as much as 318 lb-ft of torque and 154 horsepower* at the rear wheels! That's more torque than your neighbor's wimpy Kia makes in total. And the engineers at Superchips give you more power throughout the driving range, not just at wide-open throttle like some of the wannabees.

Cortex could only come from Superchips, the best-selling brand in the business.

* 2003 - 2004 Dodge Ram 5.9L 24v 250HP Cummins.



NOW AVAILABLE FOR FORD, GM, CHRYSLER, DODGE AND NISSAN/INFINITI.

IN ADDITION TO BRAIN-NUMBING POWER INCREASES, CORTEX INCLUDES MANY MUST-HAVE FEATURES:

Industry first 2-year limited powertrain warranty

One part number per OEM for greater flexibility

Tuning across the entire RPM range - provides greater increases in horsepower, torque and improved drivability

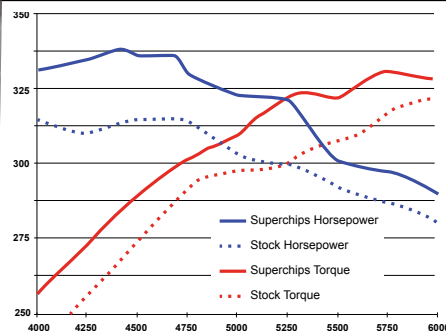
Calibrate speedometer, odometer and shift points for wheel, tire and gear size changes for optimum performance

Adjust shift points, shift firmness, vehicle speed limiter and engine rev limiter

Advanced transmission tuning features including manual adjusting of the normal driving shift schedule, 4x4 shift schedule and overdrive off shift schedule

Data Acquisition information hub - in-cabin vehicle performance monitor with real-time sensor monitoring capabilities and vehicle performance stats like 1/4 mile and 0 - 60 MPH times

**2010 Camaro SS 6.2L (Automatic)
Superchips Performance Tune**



Max HP gain is 21.0 hp @ 5250 rpm
Max Torque gain is 21.0 lb-ft @ 5250 rpm

Not all features are available on every make, model and engine. Ask your local MVP dealer or contact Superchips Customer Care if you have any questions.

MILEAGE XS



MAN-SIZED ECONOMY

If you're looking for the secret to lasting longer and going farther, you've come to the right place. Our reputation is built on delivering impressive numbers for the street, track and trailer, but now we have expanded our reach with the Mileage XS fuel economy programmer.

Squeezing every last bit of energy out of a gallon of fuel for improved mileage is just as much of a science as making big horsepower gains. By tuning your vehicle's fuel injection, ignition and transmission shift characteristics, the Superchips Mileage XS can deliver up to a 20-percent improvement in fuel economy for diesel pickups, and 10-percent for gasoline-powered cars and trucks. We also optimize the cylinder-deactivation system on GM and Chrysler products for more fuel-sipping 4-cylinder operation from your V-8. That's money you can put in the bank instead of the tank!

The Superchips Mileage XS also lets you read and clear trouble codes, and you can recalibrate the speedometer if you change tire size or gear ratio. Free updates are available for your Mileage XS, and we even offer an upgrade program that gives you a discount if you decide to upgrade to a Flashpaq performance programmer at a later date.



CHECK OUT THESE FEATURES THAT YOU'LL FIND ONLY IN A MILEAGE XS PROGRAMMER:

Up to 20% MPG gains depending on vehicle, engine and driving conditions

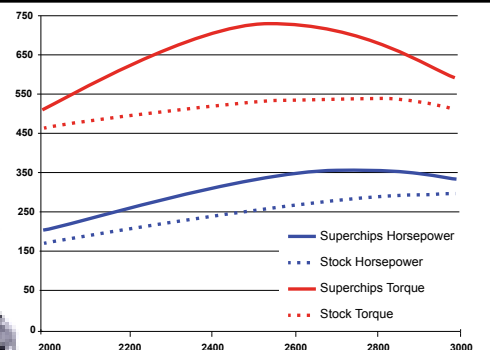
Calibrations specifically engineered for improved fuel economy

Coverage of many late-model gasoline and diesel engines for pickups and SUVs

Internet updateable through supplied USB cable

Upgradeable to a full featured Flashpaq performance programmer

**2007 - 2009 Dodge Ram 6.7L Turbo Diesel
Superchips Performance Tune**



Max HP gain is 115 hp @ 2780 rpm
Max Torque gain is 240 lb-ft @ 2780 rpm

Typical 2007 Dodge Ram 6.7L Turbo Diesel performance tune results after upgrading Mileage XS to a Flashpaq performance programmer. See Superchips.com for upgrade details.

Not all features are available on every make, model and engine. Ask your local MVP dealer or contact Superchips Customer Care if you have any questions.

**NOW AVAILABLE FOR FORD, GM,
CHRYSLER AND DODGE.**

TOWING SPOTLIGHT



DIESEL TRUCK

Diesel truck tuning has long been thought of as the backbone of the professional tuning industry. No one, we mean no one, does it better than Superchips. Superchips practically invented the diesel tuning industry. But our advantage goes well beyond years on the job.

Over 26-years later, we still know what you want for your diesel truck—maximum reliable power. There are several key factors to creating a towing tune for your vehicle. First, it has to maximize power without causing you headaches. That means no broken parts caused by the increased power. One of the measurements we use in our diesel testing is Exhaust Gas Temperature (EGT).

This is especially critical in turbo diesel applications. It's easy to create really impressive power increases in these applications, but a skyrocketing EGT is going to lead to broken engine parts, no questions asked.

Second, how about the more towing power and better drivability? Not a "from the factory" setup, but Superchips drivability combined with Superchips to-the-wheel towing power. We have engineers that adjust all of the elements that affect vehicle towing power through the entire RPM band: air/fuel ratio, spark timing, shift characteristics, throttle position, throttle slope and fuel injector flow rates. Trust us, there's a big difference with Superchips driveline optimization tuning strategy.

FORD SUPER DUTY 6.4L POWER STROKE

The Ford Super Duty is considered by many to be the working man's truck with a maximum towing capacity of up to 24,600 lbs. and maximum payload capacity of up to 6,180 lbs. which means fewer trips and less time spent on those heavy load projects. Ford says it's built stronger, tougher and better. We agree, but there is still vast room for improvement to the Power Stroke engine and TorqShift transmission.

With its 6.4L displacement and dual-stage turbochargers, the 6.4L Turbo Diesel engine cranks out a beastly 350 horsepower and 650 lb-ft of torque, but seriously is that enough? Superchips Flashpaq generates up to an extra 114 horsepower and 206 lb-ft of torque for the 2008 – 2010 Super Duty 6.4L. Now that's fire breathing power!!!

The TorqShift transmission was designed for the high torque of a turbo diesel engine and includes a selectable Tow/Haul Mode that compensates for altitude, grade and load. It also features a three-plate, two-stage torque converter to reduce noise when the converter is locked. Now, program in Superchips tuning to optimize the shift points and firmness combined with the extra to-the-wheels power and you have a Superchips optimized towing experience: off-the-line throttle improvement, increased horsepower while still being able to tow the OEM recommended weight limit, eliminate unnecessary downshifting and create enough torque to handle grade climbs at speed.

**MAKE SURE YOUR
FORD POWER STROKE IS
SUPERCHIPS EQUIPPED**

Part #	Make/Model	Year	Engine	Trans	Shift Points	Shift Firmness	Speed Limiter	Tire	Gear	Rev Limiter	Adjust Fan	HP	TQ	CARB EO
1950 1855	F-250 SD, F-350 SD	08-10	6.4L Diesel	All	SC Optimized	SC Optimized	Yes	Yes	No	No	No	+114.0 HP	+206.0 lb-ft	No Existing Test

See page 22 for complete details on Superchips' Ford Super Duty 6.4L coverage and other Ford vehicles.

CHEVROLET HEAVY DUTY 6.6L DURAMAX

The Chevrolet Heavy Duty is touted to be America's Best Truck. With exclusive features such as the 6.6L B5 bio-diesel compatible engine, variable-geometry turbo charger with air-to-air intercooler, Allison 1000 6-speed transmission and noise reducing common rail fuel injection system, we would find it hard to disagree. All this mumbo jumbo got us thinking- if you add Superchips tuning to the Chevrolet Heavy Duty, will we have to start referring to it as 'America's Most Bolest Truck'?

The 6.6L Turbo Diesel cranks out a best-in-class 365 horsepower and 660 lb-ft of torque. Wicked sweet! But to be honest, not that sweet when weak off the line acceleration and too much downshifting under heavy load are an issue. The Chevrolet Heavy Duty's maximum single rear wheel towing capacity of up to 13,000 lbs. (15,900 lbs. for dual rear wheel) is more than enough for most people, but for the best towing performance, tune with Superchips.

The Allison 1000 Series six-speed transmission is legendary for its performance. It features a Tap-up/Tap-down driver shift control feature on the gear shift lever, auto-grade braking to help slow the truck while descending long, steep grades and shift stabilization. Combine all of that with the automatic locking rear differential and Superchips tow tuning and, you have a Superchips optimized towing experience: off-the-line throttle improvement, increased horsepower while still being able to tow the OEM recommended weight limit, eliminate unnecessary downshifting and enough torque to handle grade climbs at speed.

**MAKE SURE YOUR
CHEVROLET DURAMAX
IS SUPERCHIPS EQUIPPED**

Part #	Make/Model	Year	Engine	Trans	Shift Points	Shift Firmness	Speed Limiter	Tire	Gear	Rev Limiter	Adjust Fan	HP	TQ	CARB EO
2950 2855	2500 & 3500 Pickups	07-08	6.6L Diesel	No	No	No	Yes	No	No	No	No	+77.0 HP	+117.0 lb-ft	No Existing Test
2950 2855	2500 & 3500 Pickups	02-07	6.6L Diesel	No	No	No	Yes	26" - 38"	No	No	No	+119.9 HP	+206.4 lb-ft	No Existing Test
2506	2500 & 3500 Pickups	2001	6.6L Diesel	No	No	No	No	No	No	No	No	+88.9 HP	+141.4 lb-ft	No Existing Test

See page 24 for complete details on Superchips' Chevrolet Heavy Duty 6.6L coverage and other GM vehicles.

DODGE RAM 6.7L CUMMINS

The Dodge Ram Heavy Duty is the easy-to-love king of the hill. Payload pay dirt, impressive weight ratings and Cummins diesel power, what more could a truck lover want? How about enough power to clean and jerk any tree stump you throw at it? Tune your Ram Heavy Duty with a Superchips Flashpaq and that is exactly what you get.

With its 6.7L displacement and variable geometry turbocharger, the 6.7L Cummins cranks out a pavement trembling 350 horsepower and 650 lb-ft of torque. Sounds like a caged beast ready for the toughest of jobs. But is stock power really enough for your copious dreams of stump pulling? Superchips doesn't think so. Superchips Flashpaq (part no. 3855) generates up to an extra 115 horsepower and 240 lb-ft of torque for the 2007 - 2009 Heavy Duty 6.7L. Now that's a true American workhorse!!!

The optional six-speed transmission is a jobsite regular for its durability and performance. Combine a top notch transmission with the integrated exhaust brake, higher fuel injector pressure, integrated intake grid and Superchips tow tuning, and you have a Superchips optimized towing experience: off-the-line throttle improvement, increased horsepower while still being able to tow the OEM recommended weight limit, eliminate unnecessary downshifting and enough torque to handle grade climbs at speed.

**MAKE SURE YOUR
DODGE CUMMINS IS
SUPERCHIPS EQUIPPED**

Part #	Make/Model	Year	Engine	Trans	Shift Points	Shift Firmness	Speed Limiter	Tire	Gear	Rev Limiter	Adjust Fan	HP	TQ	CARB EO
3950 3855	Ram Pickup	07-09	6.7L Turbo Diesel	All	No	No	No	22.5" - 42"	Not Required	Superchips Optimized	No	+115.0 HP	+240.0 lb-ft	No Existing Test

See page 29 for complete details on Superchips' Dodge Heavy Duty 6.7L coverage and other Dodge vehicles.

OFF-ROAD SPOTLIGHT

IT'S A JEEP THING. AND WE UNDERSTAND.

We know Jeeps, and we know what you want for your Jeep. How about a little more power and fuel economy? Yeah, that's what we're talking about! You're not looking to win races, but an extra 24 horsepower and 28 lb-ft of torque is exactly what you need to regain the performance that your Jeep had before you added those larger off-road tires. That's exactly what Superchips delivers for 4.0-litre powered Jeeps, and similar gains for most other late-model Jeep vehicles. Also, the latest Jeep Flashpaq for the Wrangler JK puts the power to control critical off-road features in the palm of your hand.

JEEP VEHICLE FEATURES & BENEFITS

- Select between multiple performance calibrations
- Towing and fuel economy calibrations are also included
- Automatic transmission shift optimization
- Speedometer calibration after changing tire size and/or gear ratios
- Works with most cold-air intakes and cat-back exhaust systems
- Applications for '98-current Grand Cherokees, all Commanders and '98-current Wranglers

In addition, the following features are included in the Superchips Jeep Flashpaq for '07-current Jeep Wrangler (JKs):

- Real-time Idle Up
- Adjust the tire pressure monitoring system alarm
- Lock your Rubicon lockers in 4-HI
- Control electric fan on and off temperatures
- Crawling Tune off-road throttle-response calibration

Part #	Make/Model	Year	Engine	Trans	Shift Points	Shift Firmness	Speed Limiter	Tire	Gear	Rev Limiter	Adjust Fan	HP	TQ	CARB EO
3875	Wrangler JK	07-09	3.8L	SC Optimized	No	SC Optimized	User Adjusted	22.5" - 42"	Yes	No	Yes	+18.0 HP	+24.0 lb-ft	D-330-9
	Wrangler TJ	98-06	4.0L	SC Optimized	No	SC Optimized	User Adjusted	If Vehicle Equipped	If Vehicle Equipped	No	No	+24.0 HP	+28.0 lb-ft	D-330-9

See page 31 for complete details on Superchips' Jeep coverage.

EXTREME SPORTS WITH A STEERING WHEEL

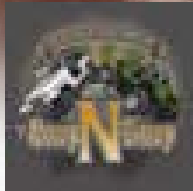
The sun just dipped below the horizon and the temperature is plummeting. You're buddy picked a poor line and is hopelessly stranded 30 feet down a hill that there's no way he can drive his way out of. Blamed it on the low sun being in his eyes – whatever. Now it's up to you and your Jeep Wrangler to winch his sorry carcass back onto the trail before both of you end up as statistics.

Whether it's rescuing your fellow off-roaders – oh yeah, and maybe sometimes yourself – or starting the most challenging trail of your life, going equipped makes the difference between coming home or becoming vulture feed. You've probably already plunked down nearly \$2,000 for off-road wheels and tires, and maybe another chunk of change for on-board air and other trail equipment. Now, use the power of your Jeep JK's computer to get the most out of this equipment. Because that's what it's all about – pushing yourself and your Jeep to the limit.

Superchips Jeep Flashpaq gives you, first and foremost, more power to spin those gnarly mud terrains. But there's way more than that. It unlocks the power of your Jeep's powertrain control module and hands you the key. The power to raise the idle RPM, which is exactly what you'll need when you're winching your buddy's 4x4 back onto the trail and using your air compressor at the end of the day. The power to make it a short night instead of an all-nighter. Check out everything the Superchips Jeep Flashpaq can do for you on page 31.



Official Sponsor



**MAKE SURE YOUR JEEP
IS SUPERCHIPS EQUIPPED**

▲ WARNING

Increasing the height of your vehicle raises the center of gravity and can affect stability and control. Use caution on turns and when making steering corrections.



TRACK SPEED SPOTLIGHT



Performance cars are in our blood, that is where Superchips started over 26-years ago making waves in the road-racing circuit as one of the first companies tuning vehicles with computer controlled fuel-injection systems.

Over 26-years later, we still know what you want for your performance car. How about a little more power and better drivability? Not “from the factory” drivability, Superchips performance car drivability combined with Superchips to-the-wheel power. Trust us, there’s a big difference and it starts with driveline optimization and making sure your performance hard part additions perform seamlessly with your Superchips tuning.

FORD MUSTANG SHELBY GT500

Yeah, that’s what we’re talking about! Considered by many to be the working man’s performance car, the 2007 – 2010 Shelby GT500 tears it up right from the factory. But if you’re looking to win races or impress your friends at the next open track day, an extra 53 horsepower and 35 lb-ft of torque is what you need to maximize your performance. That’s exactly what Superchips delivers for the 5.4-litre powered Shelby GT500’s!

A common upgrade for the GT500 is a cold-air intake package or low-restriction exhaust system. Superchips programmers are friendly with both and when you combine Superchips Synergy Tuning with a cold-air kit on the GT500, the results are a butt-puckering, yet smooth 100 horsepower and 66 lb-ft of torque to the rear wheels! That is simply the meanest GT500 tuning you will find in a hand-held programmer anywhere!



**MAKE SURE YOUR GT 500
IS SUPERCHIPS EQUIPPED**

Shelby GT500 Vehicle Features & Benefits

- Select between multiple performance calibrations
- Fuel economy calibration is also included
- Automatic transmission shift optimization
- Speed and rev limiter removal
- Speedometer calibration after changing gear ratios
- Adjust electric fan settings
- Performance hard part integration with Superchips professional tuning
- Applications for 2007 – 2010 Shelby GT500 5.4-litres

Part #	Make/Model	Year	Engine	Trans	Shift Points	Shift Firmness	Speed Limiter	Tire	Gear	Rev Limiter	Adjust Fan	HP	TQ
1950 1865	Shelby GT500	07-10	5.4L	All	No	No	Yes	No	Yes	Yes	Yes	+53.0 HP	+35.0 lb-ft

See page 22 for complete details on Superchips’ Shelby GT500 coverage and other Ford vehicles.

PONTIAC G8 GT

Pontiac has long been known as the performance brand for GM. Its' heritage as the 'athletic' performance car has long resonated with Pontiac fans. The 2008 – 2009 G8 GT is a new breed of athletic performance car pumping out 361 horsepower and 385 lb-ft of torque out of the 6.0-litre small block V-8. Even if Pontiac isn't sticking around, Superchips passion for the G8 GT is.

The G8 GT is a great base performance car offering good streetable power from the factory and comes with active fuel management technology for enhanced fuel economy under light-load. But if you really want to experience the gift that is variable valve timing and the Hydra-Matic clutch-to-clutch six-speed 6L80 transmission, then you need to tune with Superchips. Engine power, dynamic transmission performance, active fuel management optimization and pure performance car drivability is exactly what Superchips delivers for the G8 GT!

Superchips' 91-Performance tune found standard in Flashpaq and Cortex delivers a 0 – 60 MPH improving 15 horsepower and 15 lb-ft of torque. And Superchips Synergy Tuning is building a growing catalog of cold air intake and exhaust kit tunes to bring performance synergy to your G8 GT making Superchips the number one choice for G8 tuning!

G8 GT Vehicle Features & Benefits

- Select between multiple performance calibrations
- Automatic transmission shift optimization
- Speed and rev limiter removal
- Speedometer calibration after changing gear ratios
- Adjust shift firmness and electric fan settings
- Performance hard part integration with Superchips professional tuning
- Applications for 2008 – 2009 G8 GT 6.0-litres



**MAKE SURE YOUR G8 GT IS
SUPERCHIPS EQUIPPED**

Part #	Make/Model	Year	Engine	Trans	Shift Points	Shift Firmness	Speed Limiter	Tire	Gear	Rev Limiter	Adjust Fan	HP	TQ	CARB EO
2865	G8 GT	08-09	6.0L	All	Yes	Yes	Yes	No	Yes	Yes	Yes	+15.2 HP	+15.4 lb-ft	D-330-10

See page 28 for complete details on Superchips' Pontiac G8 GT coverage and other GM vehicles.

DODGE & CHRYSLER 3.5L LX

The 2008 – 2009 Dodge and Chrysler 3.5L LX platform is a small displacement performance engine for the new-breed enthusiast. Owners of the 2008 Magnum; 2008 – 2009 Charger; and 2008 – 2009 300 know these cars are strong performance cars.

The LX platform has produced great performance cars offering street power and style. But if your want to experience the real nature of your LX, you need the optimized performance of an even better tune with Superchips. For the Dodge Magnum LX, Superchips delivers exactly what you need: increased engine power, dynamic transmission performance and pure performance driveability.*

3.5L LX Platform Vehicle Features & Benefits

- Faster ¼ mile and 0 – 60 MPH times
- Automatic transmission shift optimization
- Speed limiter removal
- Advanced torque management
- Recalibrate for tire changes: 17" – 32"
- Recalibrate for gear changes: 2.00 – 10.00
- Monitors and records driving and vehicle performance with data logging
- Performance hard part integration with Superchips professional tuning



**MAKE SURE YOUR 3.5L LX
IS SUPERCHIPS EQUIPPED**

Part #	Make/Model	Year	Engine	Trans	Shift Points	Shift Firmness	Speed Limiter	Tire	Gear	Rev Limiter	Adjust Fan	HP	TQ	CARB EO
3950 3865	300 (non AWD)	08-09	3.5L LX	All	Yes	Yes	Yes	17" - 32"	Yes	Yes	Yes	+13.0 HP	+11.0 lb-ft	D-330-9
3950 3865	Charger (non AWD)	08-09	3.5L LX	All	Yes	Yes	Yes	17" - 32"	Yes	Yes	Yes	+13.0 HP	+11.0 lb-ft	D-330-9
3950 3865	Magnum (non AWD)	2008	3.5L LX	All	Yes	Yes	Yes	17" - 32"	Yes	Yes	Yes	+13.0 HP	+11.0 lb-ft	D-330-9

See page 29 and 30 for complete details on Superchips' LX Platform coverage and other Dodge and Chrysler vehicles.

* Does not include AWD or Police Package RWD vehicles.

PERFORMANCE TRUCK

Superchips knows trucks. Over 26 years of truck tuning qualifies as a pretty intimate knowledge, and we know exactly what your truck wants. How about more speed, towing power or some much needed fuel economy?

Trust us, there's a big difference between Superchips and the other guys, and it starts with driveline optimization and making sure your gasoline-powered truck is setup to perform for exactly how you want to use it. You're not looking to win races, but an extra 20, 30, even 40 horsepower is exactly what you need to liven up your next weekend trip to the lake.

DODGE RAM HEMI

Where there's tire smoke there's a Dodge Ram HEMI driver. The HEMI Ram is the uncommon combination of power and drivability that thrills owners on a daily basis. And HEMI Ram owners know a thing or two about driving with attitude and purpose. They also know Superchips is a necessary addition to maximize performance and having critical driveline control features in the palm of your hand. That's exactly what Superchips delivers, tipping the scales at an additional 21.4 horsepower and 34.2 lb-ft of torque for the 2003 and 17.8 horsepower and 26.3 lb-ft of torque for the 2004 – 2008 Ram HEMI.

Advanced transmission tuning features include manual adjusting of the normal driving shift schedule, 4x4 shift schedule and overdrive off shift schedule*

A common upgrade for the Ram is a cold-air intake package or low-restriction exhaust system. Superchips programmers are friendly with both and when you combine Superchips Tuning with a cold-air kit on the Ram, the results are nasty, yet with smooth power to the rear wheels!

Ram HEMI Vehicle Features & Benefits

- Select between multiple performance calibrations
- Fuel economy calibration is included
- Automatic transmission shift optimization
- Advanced transmission tuning features available for download*
- Optimized towing power
- Speed and Rev limiter adjust
- Speedometer calibration after changing tire size, axle gear ratio or transfer case gear ratio
- Real-time idle up for running accessories
- Torque management @ Wide Open Throttle
- Adjust electric fan settings at low, medium and high speeds
- Performance hard part integration with Superchips professional tuning
- Applications for 2003 – 2008 Dodge Ram 5.7L HEMI

**MAKE SURE YOUR HEMI RAM
IS SUPERCHIPS EQUIPPED**

Part #	Make/Model	Year	Engine	Trans	Shift Points	Shift Firmness	Speed Limiter	Tire	Gear	Rev Limiter	Adjust Fan	HP	TQ	CARB EO
3950 3865	Dodge Ram	04-08	5.7L HEMI	All	Yes	SC Optimized	Yes	22.5" - 42"	Not Req.	Yes	No	+17.8 HP	+26.3 lb-ft	D-330-9
3865	Dodge Ram	2003	5.7L HEMI	All	No	SC Optimized	Yes	22.5" - 42"	Not Req.	Yes	No	+21.4 HP	+34.2 lb-ft	D-330-9

See page 29 for complete details on Superchips' HEMI Ram coverage and other Dodge vehicles.

* Late availability, spring 2010 (tentative).

NISSAN TITAN

Superchips wants to clear the air. Nissan makes a damn good truck. The Titan is purpose-built and has some serious brute strength that has caused some people to wonder if Superchips tunes the Titan for Nissan. We don't, but we do make a performance programmer for it. All it takes is a Flashpaq to give the Titan true man-sized power. After all, it's about having power and the flexibility to optimize the driveline for how you want to use your truck, not one standard set of factory settings for everyone.

Tire-smoking power comes standard with all performance tunes from Superchips. For the 2004 Titan, we rattle your teeth with up to 35.7 horsepower and 46.2 lb-ft of torque and up to 21.1 horsepower and 27.1 lb-ft of torque for the 2005 – 2010 Titan's. Choose from multiple performance tunes, towing or the fuel economy tune to personalize your truck-use experience. We didn't make your Titan. We just make it better.

Titan Vehicle Features & Benefits

- Select between multiple performance calibrations
- Fuel economy calibration is included
- Automatic transmission shift optimization
- Optimized towing power
- Industry leading drivability
- WOT restriction removal
- Enhanced throttle response
- Faster ¼ mile and 0 – 60 times
- Real time performance driving and vehicle sensor monitoring and recording
- Speed and Rev limiter adjust
- Check ignition timing and fluid temperatures
- Applications for 2004 – 2010 Nissan trucks and SUVs



**MAKE SURE YOUR TITAN
IS SUPERCHIPS EQUIPPED**

Part #	Make/Model	Year	Engine	Trans	Shift Points	Shift Firmness	Speed Limiter	Tire	Gear	Rev Limiter	Adjust Fan	HP	TQ	CARB EO
4950 4865	Nissan Titan	05-10	5.6L	No	No	No	Yes	No	No	Yes	No	+21.1 HP	+27.1 lb-ft	Pending
4950 4865	Nissan Titan	2004	5.6L	No	No	No	Yes	No	No	Yes	No	+35.7 HP	+46.2 lb-ft	Pending

See page 30 for complete details on Superchips' Titan coverage and other Nissan vehicles.

SUPERCHIPS SYNERGY TUNING

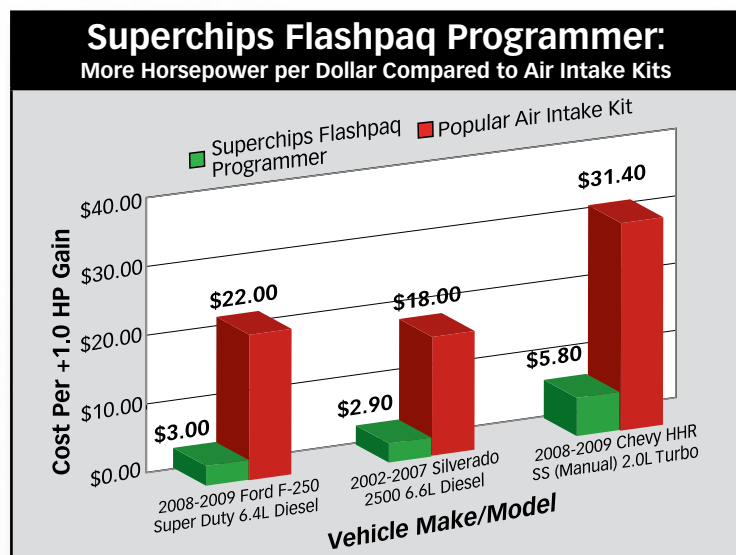
Superchips programmers are all about squeezing the most power out of your engine and making it work in your vehicle. What happens when you add hard parts? Sometimes hard parts can cause more trouble than benefit if they are not accounted for in the tuning. That's where Superchips Synergy Tuning comes in.

Our engineering team tests, tests and tests hard part additions until they get it right. We don't just bolt on one hard part and think our tuning will work for every manufacturer and hard part combination. That could lead to horrible performance results and damaged parts. Our team collaborates with many of the best aftermarket manufacturers in the industry, so that we can create an optimized relationship between our products, maximizing your vehicle's potential.

All the development work is done right here in Sanford, Florida at the Superchips facility, so the engineering can be performed in a controlled environment. Once complete, further quality control testing is done at altitude and in desert climates. This allows Superchips to release a quality tuning solution for your hard parts, and get them all working together to provide the maximum performance you craved when you bought the parts and spent hours on installation.

Superchips has been doing this over 26 years, so when you purchase a Superchips programmer with Superchips Synergy Tuning, you're actually purchasing all of the expertise and knowledge that we've acquired from the first day we opened the doors.

Check with Superchips to see what is available in hard part tuning for your vehicle. You'll be surprised at the difference our tuning will make.



EMISSIONS

Superchips is at the forefront in bringing you up-to-date, street legal parts that comply with federal and state emissions regulations. Superchips is working vigorously to be street legal in all 50 states per established CARB (California Air Resources Board) and EPA (Environmental Protection Agency) regulations.

Superchips applies for and obtains CARB executive orders (E.O.'s) for emissions-related products and expects to be fully certified in 2010. CARB requires specialty-parts manufacturers who sell emissions-related products in California to obtain certification for such parts. Failure to do so can result in fines and an inability to pass routine Inspection and Maintenance (IM) tests conducted by the state. We hate when that happens, so we're on it.

Nationally, the EPA has similar guidelines, thus resulting in the installation of an emission related part not supported by a CARB E.O., to be considered a violation of the tampering provisions in both the California Vehicle Code and Federal Clean Air Act.

CARB/EPA

WARRANTY

SATISFACTION GUARANTEE

If for any reason during the first thirty (30) days after your purchase of a new Superchips "Product", you may return it to the place of purchase for a full refund of the purchase price, credit or a replacement Product at the dealer's discretion. This Guarantee does not apply to Products purchased from auction websites, nor does it apply to Products purchased used. Follow these procedures to get your refund, credit or replacement.

- Return your vehicle to the stock settings. Instructions are included in the user instruction manual. A VIN-locked Product may not be returned for a refund, credit or replacement.
- Put the Product including accessories back in its original packaging.
- Make a copy of your sales receipt. The sales receipt must be from the location where you purchased the Product and must include the name of the business, its address and the part number or description of the applicable Superchips Product. Invoices, credit card statements or sales receipts from an online payment service company will not be accepted.
- Return the Product in its original packaging with a copy of the sales receipt to the place of purchase.

SERVICE GUARANTEE

In case of malfunction, your Superchips Product will be repaired free of charge according to the terms of the warranty. When returning Products for warranty service, Proof of Purchase must be supplied for verification. After the warranty period has expired, repair service is based on a minimum and maximum fee.

All returns must have a Return Authorization (RA) number issued to them before being returned. To obtain an RA number, please contact Superchips Customer Service at 1(407) 585-7000.

When returning the Product for repair, include all package contents including cables. Be sure to include a detailed account of any problems experienced, and what components and accessories are installed on the vehicle. The repaired unit will be returned as soon as possible using ground shipping methods (ground shipping is covered by warranty). For more information, call Superchips at 1(407) 585-7000. Superchips technicians are available from 8:00 a.m. to 5:00 p.m. Monday - Friday (EST).

LIMITED WARRANTY

Superchips warrants this product to be free from defects in material and workmanship under its intended normal use*, when properly installed and purchased from an authorized Superchips dealer, for a period of one year from the date of the original purchase. This warranty is void for any products purchased through auction websites. If found to be defective as mentioned above, it will be repaired or replaced at the option of Superchips. Any item that is covered under this warranty will be returned free of charge using ground shipping methods.

This shall constitute the sole remedy of the purchaser and the sole liability of Superchips. To the extent permitted by law, the foregoing is exclusive and in lieu of all other warranties or representation whether expressed or implied, including any implied warranty of merchantability or fitness. In no event shall Superchips or its suppliers be liable for special or consequential damages.

- * Intended normal use means that this item is being used as was originally intended and for the original application as sold by Superchips. Any modifications to this item, or if it is used on an application other than what Superchips markets the product, the warranty will be void. It is the sole responsibility of the customer to determine that this item will work for the application they are intending. Superchips will accept no liability for custom applications.

FREQUENTLY ASKED QUESTIONS

VEHICLE WARRANTY

Does installing the programmer void my warranty?

No. It is illegal for a dealership to void your warranty based solely on the fact that you have installed an aftermarket product. The dealership must prove in a court of law, that an aftermarket product has decisively caused damage to vehicle under warranty. As a precaution, always remove the tuning before going to a dealer for service.

For information regarding denial of warranty coverage, review the Magnuson-Moss warranty act on the SEMA Action Network website: www.semanet.com/main/main.asp

Will my dealer know that I have installed aftermarket tuning, if I return my vehicle to stock first before going to my dealer?

On most vehicles no. Superchips does not leave ghost data or a data footprint. It is highly recommended to return your vehicle to stock prior to going to a dealer for service to avoid any hassles or complications.

BUYING A SUPERCHIPS PROGRAMMER

Is there a place that I can visit to find out how satisfied your customers are with their Superchips programmers?

Third-party forums can be a valuable tool as well as the Superchips forum available on our website at www.superchips.com. Or you can visit your local MVP dealer for advice on which Superchips product is right for you. Visit www.superchips.com for the location of a dealer near you.

How do I determine if I am purchasing my Superchips product from an authorized dealer?

Many Superchips dealers advertise that they are an authorized dealer. If you are unsure, you can use the dealer search tool at www.superchips.com to find an authorized dealer near you.

Can I get some feedback on the level of customer satisfaction for a particular dealer before buying from them?

Third-party forums can be a valuable tool as well as the Superchips forum available on our website at www.superchips.com.

If you are unhappy with your shopping experience with a particular dealer, please let us know so we can do what we can to make sure you have the best possible experience.

How do I know if I am getting the best price, on my Superchips product?

Research is the best option. Try an internet search for Superchips or one of our product names (Flashpaq, Cortex) and you'll get thousands of options to look at and price compare.

Is there a guarantee that I will be satisfied or that I can get my money back?

YES. All Superchips products carry a 30 day money back guarantee. The guarantee can be found on page 19 of this catalog.

SUPERCIPS & YOUR VEHICLE

Where can I learn more about specifics for my vehicle?

Details about what a Superchips programmer will do for your vehicle can be found at www.superchips.com.

Why do I have to update my programmer before I tune my vehicle?

Superchips wants you to have the most up-to-date firmware and calibrations in your programmer prior to tuning the vehicle so you can enjoy the latest and greatest features.

How often can I change the tuning in my vehicle?

As often as you like.

Can I install other modifications on my vehicle?

Superchips tuners are designed for use on primarily stock vehicles. In many cases, however, the addition of a Cold Air Intake and Exhaust System will improve performance.

If you have further questions on adding hard parts and compatibility with a Superchips product, give us a call at 1 (407) 585-7000. We'll be happy to answer your questions.

Can I still use my tow haul button?

Yes, you can use the tow haul button as normal as it does not affect Superchips tuning while driving under heavy load.

Can I program my other vehicle with the same tuner?

Our products only program one VIN at a time. You can return the vehicle to stock and use the programmer on a different vehicle as long as it is covered by the programmer you own.

I understand I can do up to three power levels and read and clear trouble codes. What else can I do with my programmer?

Superchips Data Acquisition software is an advanced set of tools for your programmer that give you some pretty advanced features. DAQ 1 provides your programmer with data logging capabilities including: timed runs, 0 to 40 through 0 to 70 MPH, last run history, best speed and times history, and 60 foot through ¼ mile logging.

DAQ 2 provides your programmer with the ability to monitor your vehicle's performance in real time by reading and displaying vehicle PIDs including: air and fuel data, Mass Air Flow rates and temperature, ignition timing, injector fuel rates, direct sensor information, diagnose faulty sensors, monitor fluid temperatures, view powertrain data and engine and transmission sensor data.

OTHER COMMON QUESTIONS

Why don't you tune vehicles older than 1999 anymore?

We no longer offer tuning for the older vehicles due to their age, and that their computers are not as capable as the 99' and up vehicles.

If you have one of these vehicles, there are many sources that still sell previous generation Superchips products that do support older model vehicles.

I live in Canada, can I use this programmer all year or should I remove the tuning in the winter time and make it stock?

You can use the tuning all year round. Temperature does not effect the performance.



PROGRAMMER OPTIONS REFERENCE GUIDE

FORD

Cortex: black part numbers Flashpaq: red part numbers Mileage XS: green part numbers

Make/Model	Year	Engine	Part #	Trans	Shift Points	Shift Firmness	Speed Limiter	Tire	Gear	Rev Limiter	Adjust Fan	HP	TQ	CARB EO
F-150	09-10	5.4L	1950	Yes	Yes	Yes	Yes	28" - 38"	Yes	Yes	No	+38.0 HP	+57.0 lb-ft	D-330-9
		4.6L	1865	Yes	Yes	Yes	Yes	28" - 38"	Yes	Yes	No	+10.0 HP	+19.0 lb-ft	D-330-9
	04-08	5.4L	1950	All	Yes	Yes	Yes	28" - 40"	Yes	Yes	No	+27.0 HP	+30.0 lb-ft	D-330-9
		4.6L	1865	All	Yes	Yes	Yes	28" - 40"	Yes	Yes	No	+20.0 HP	+15.0 lb-ft	D-330-9
		4.2L	1516	All	Yes	Yes	Yes	28" - 40"	Yes	Yes	No	+11.0 HP	+13.0 lb-ft	D-330-9
	99-03	5.4L	1950	All	Yes	Yes	Yes	28" - 40"	Yes	Yes	No	+20.0 HP	+28.0 lb-ft	D-330-9
		4.6L	1865	All	Yes	Yes	Yes	28" - 40"	Yes	Yes	No	+18.0 HP	+26.0 lb-ft	D-330-9
F-150 SFE	2009	4.6L	1950	All	Yes	Yes	Yes	28" - 38"	Yes	Yes	No	+10.0 HP	+19.0 lb-ft	D-330-9
F-250 SD, F-350 SD, F-450	08-10	6.4L Diesel	1950	All	SC Optimized	SC Optimized	Yes	Yes	No	No	No	+114.0 HP	+206.0 lb-ft	No Existing Test
	03-07	6.0L Diesel	1950	All	SC Optimized	SC Optimized	Yes	28" - 40"	No	SC Optimized	No	+111.4 HP	+162.5 lb-ft	No Existing Test
		6.0L Diesel	1506	All	SC Optimized	SC Optimized	Yes	28" - 38"	No	SC Optimized	No	Economy	Economy	No Existing Test
	99-03	7.3L Diesel	1950	All	SC Optimized	SC Optimized	Yes	28" - 40"	No	SC Optimized	No	+111.5 HP	+205.0 lb-ft	No Existing Test
		7.3L Diesel	1506	All	SC Optimized	SC Optimized	Yes	28" - 38"	No	SC Optimized	No	Economy	Economy	No Existing Test
F-250 SD, F-350 SD	2008	6.8L	1950	All	SC Optimized	SC Optimized	Yes	No	No	No	No	+27.0 HP	+30.0 lb-ft	D-330-9
	08-10	5.4L	1865	All	SC Optimized	SC Optimized	Yes	No	No	No	No	+25.0 HP	+49.0 lb-ft	D-330-9
	99-07	6.8L	1950	All	N/A '01 - '05	N/A '01 - '05	Yes	28" - 40"	No	No	No	+25.0 HP	+49.0 lb-ft	D-330-9
		5.4L	1950	All	N/A '01 - '05	N/A '01 - '05	Yes	28" - 40"	No	No	No	+27.0 HP	+33.0 lb-ft	D-330-9
		6.8L, 5.4L	1516	All	N/A '01 - '05	N/A '01 - '05	Yes	28" - 40"	No	No	No	Economy	Economy	D-330-9
Excursion	03-07	6.0L Diesel	1950	All	SC Optimized	SC Optimized	Yes	28" - 40"	No	SC Optimized	No	+111.4 HP	+162.5 lb-ft	No Existing Test
		6.0L Diesel	1506	All	SC Optimized	SC Optimized	Yes	28" - 38"	No	SC Optimized	No	Economy	Economy	No Existing Test
	99-03	7.3L Diesel	1950	All	SC Optimized	SC Optimized	Yes	28" - 40"	No	SC Optimized	No	+111.5 HP	+205.0 lb-ft	No Existing Test
		7.3L Diesel	1506	All	SC Optimized	SC Optimized	Yes	28" - 38"	No	SC Optimized	No	Economy	Economy	No Existing Test
	99-06	6.8L	1950	All	N/A 5R110 Trans.	N/A 5R110 Trans.	Yes	28" - 40"	Yes	Yes	No	+25.0 HP	45.0 lb-ft	D-330-9
		5.4L	1950	All	N/A 5R110 Trans.	N/A 5R110 Trans.	Yes	28" - 40"	Yes	Yes	No	+20.0 HP	+28.0 lb-ft	D-330-9
		6.8L, 5.4L	1516	All	N/A 5R110 Trans.	N/A 5R110 Trans.	Yes	28" - 40"	Yes	Yes	No	Economy	Economy	D-330-9
Expedition	99-08	5.4L	1950	All	N/A 5R110 Trans.	N/A 5R110 Trans.	Yes	28" - 40"	Yes	Yes	No	+20.0 HP	+28.0 lb-ft	D-330-9
	99-08	4.6L	1950	All	N/A 5R110 Trans.	N/A 5R110 Trans.	Yes	28" - 40"	Yes	Yes	No	+18.0 HP	+26.0 lb-ft	D-330-9
	99-06	5.4L, 4.6L	1516	All	N/A 5R110 Trans.	N/A 5R110 Trans.	Yes	28" - 40"	Yes	Yes	No	Economy	Economy	D-330-9
Ranger	99-09	4.0L	1950	All	Yes	Yes	Yes	28" - 40"	Yes	Yes	No	+13.8 HP	+19.6 lb-ft	D-330-9
		3.0L	1865	All	Yes	Yes	Yes	28" - 40"	Yes	Yes	No	+16.0 HP	+17.0 lb-ft	D-330-9
		4.0L, 3.0L	1516	All	Yes	Yes	Yes	28" - 40"	Yes	Yes	No	Economy	Economy	D-330-9
Shelby GT500	07-10	5.4L	1950	All	No	No	Yes	No	Yes	Yes	Yes	+53.0 HP	+35.0 lb-ft	D-330-9
Mustang GT	05-10	4.6L	1950	All	Yes	Yes	Yes	No	Yes	Yes	Yes	+14.0 HP	+22.0 lb-ft	D-330-9
	99-04	4.6L	1865	All	Yes	Yes	Yes	No	Yes	Yes	Yes	+14.0 HP	+22.0 lb-ft	D-330-9
Mustang	05-10	4.0L	1950	All	Yes	Yes	Yes	No	Yes	Yes	Yes	+10.0 HP	+17.0 lb-ft	D-330-9
	2004	3.9L	1865	All	Yes	Yes	Yes	No	Yes	Yes	Yes	+15.4 HP	+18.6 lb-ft	D-330-9

LINCOLN

Make/Model	Year	Engine	Part #	Trans	Shift Points	Shift Firmness	Speed Limiter	Tire	Gear	Rev Limiter	Adjust Fan	HP	TQ	CARB EO
Mark LT	06-07	5.4L	1950 1865	All	Yes	Yes	Yes	28" - 40"	Yes	Yes	No	+27.0 HP	+30.0 lb-ft	D-330-9
Blackwood	02-03	5.4L	1950 1865	All	Yes	Yes	Yes	28" - 40"	Yes	Yes	No	+20.0 HP	+28.0 lb-ft	D-330-9
Navigator	99-08	5.4L	1950 1865	All	N/A 5R110 Trans.	N/A 5R110 Trans.	Yes	28" - 40"	Yes	Yes	No	+20.0 HP	+28.0 lb-ft	D-330-9
		5.4L	1516	All	N/A 5R110 Trans.	N/A 5R110 Trans.	Yes	28" - 40"	Yes	Yes	No	Economy	Economy	D-330-9

MAZDA

Make/Model	Year	Engine	Part #	Trans	Shift Points	Shift Firmness	Speed Limiter	Tire	Gear	Rev Limiter	Adjust Fan	HP	TQ	CARB EO
B Series	99-09	4.0L	1950 1865 1516	All	Yes	Yes	Yes	28" - 40"	Yes	Yes	No	+13.8 HP	+19.6 lb-ft	D-330-9
		3.0L	1950 1865	All	Yes	Yes	Yes	28" - 40"	Yes	Yes	No	+16.0 HP	+17.0 lb-ft	D-330-9
		4.0L, 3.0L	1516	All	Yes	Yes	Yes	28" - 40"	Yes	Yes	No	Economy	Economy	D-330-9

MERCURY

Make/Model	Year	Engine	Part #	Trans	Shift Points	Shift Firmness	Speed Limiter	Tire	Gear	Rev Limiter	Adjust Fan	HP	TQ	CARB EO
Mountaineer	2004	4.0L	1950 1865	All	Yes	Yes	Yes	28" - 40"	Yes	Yes	No	+13.8 HP	+19.6 lb-ft	D-330-9

BUICK

Make/Model	Year	Engine	Part #	Trans	Shift Points	Shift Firmness	Speed Limiter	Tire	Gear	Rev Limiter	Adjust Fan	HP	TQ	CARB EO
LaCrosse Super	2008	5.3L	2950 2865	All	Yes	Yes	Yes	26" - 38"	Yes	Yes	No	+14.9 HP	+13.9 lb-ft	D-330-10
Ranier	03-04	5.3L	2950 2865	All	Yes	Yes	Yes	26" - 38"	Yes	Yes	No	+18.0 HP	+17.0 lb-ft	D-330-10
		5.3L	2516	All	Yes	Yes	Yes	26" - 38"	Yes	Yes	No	Economy	Economy	D-330-10

CADILLAC

Make/Model	Year	Engine	Part #	Trans	Shift Points	Shift Firmness	Speed Limiter	Tire	Gear	Rev Limiter	Adjust Fan	HP	TQ	CARB EO
Escalade	2008	6.2L	2950 2865	Yes	Yes	Yes	Yes	26" - 38"	Yes	Yes	Yes	+12.8 HP	+11.5 lb-ft	D-330-10
	2007	6.2L	2950 2865	Yes	Yes	Yes	Yes	26" - 38"	Yes	Yes	Yes	+19.9 HP	+17.1 lb-ft	D-330-10
	07-08	6.2L	2516	No	No	No	Yes	26" - 38"	Yes	Yes	Yes	Economy	Economy	D-330-10
	01-07	5.3L	2950 2865	All	Yes	Yes	Yes	26" - 38"	Yes	Yes	Yes	+18.1 HP	+26.1 lb-ft	D-330-10
	01-06	6.0L		All	Yes	Yes	Yes	26" - 38"	Yes	Yes	Yes	+12.9 HP	+15.9 lb-ft	D-330-10
	99-00	5.7L		All	Yes	Yes	Yes	26" - 38"	Yes	Yes	No	+21.0 HP	+34.0 lb-ft	D-330-10
CTS-V	2005	5.7L LS6	2950 2865	All	Yes	Yes	Yes	No	Yes	Yes	Yes	+14.0 HP	+13.2 lb-ft	D-330-10
	2004	5.7L LS1, LS6		All	Yes	Yes	Yes	No	Yes	Yes	Yes	+23.4 HP	+25.0 lb-ft	D-330-10

CHEVROLET

Make/Model	Year	Engine	Part #	Trans	Shift Points	Shift Firmness	Speed Limiter	Tire	Gear	Rev Limiter	Adjust Fan	HP	TQ	CARB EO
Silverado SS	05-08	6.0L	2950 2865	All	Yes	Yes	Yes	26" - 38"	Yes	Yes	Yes	+25.1 HP	+28.7 lb-ft	D-330-10
	99-04	6.0L	2950 2865	All	Yes	Yes	Yes	26" - 38"	Yes	Yes	No	+23.7 HP	+22.4 lb-ft	D-330-10
	99-08	6.0L	2516	All	Yes	Yes	Yes	26" - 38"	Yes	Yes	No	Economy	Economy	D-330-10
Silverado 1500	05-08	6.0L	2950 2865	All	Yes	Yes	Yes	26" - 38"	Yes	Yes	Yes	+25.1 HP	+28.7 lb-ft	D-330-10
Silverado 1500, Silverado XFE	2009	5.3L	2950 2865	All	Yes	Yes	Yes	26" - 38"	Yes	Yes	Yes	+14.9 HP	+15.4 lb-ft	D-330-10
Silverado 1500	05-08	5.3L	2950 2865	All	Yes	Yes	Yes	26" - 38"	Yes	Yes	Yes	+18.0 HP	+17.0 lb-ft	D-330-10
	2009	4.8L	2950 2865	All	Yes	Yes	Yes	26" - 38"	Yes	Yes	Yes	+11.2 HP	+11.3 lb-ft	D-330-10
	2008	4.8L	2950 2865	All	Yes	Yes	Yes	26" - 38"	Yes	Yes	Yes	+18.1 HP	+19.2 lb-ft	D-330-10
	2007	4.8L	2950 2865	All	Yes	Yes	Yes	26" - 38"	Yes	Yes	Yes	+13.1 HP	+22.0 lb-ft	D-330-10
	05-06	4.8L	2950 2865	All	Yes	Yes	Yes	26" - 38"	Yes	Yes	Yes	+13.1 HP	+16.6 lb-ft	D-330-10
	05 - 08	6.0L, 5.3L, 4.8L	2516	All	Yes	Yes	Yes	26" - 38"	Yes	Yes	Yes	Economy	Economy	D-330-10
		4.3L	2950 2865	All	Yes	Yes	Yes	26" - 38"	Yes	Yes	Yes	+19.0 HP	+24.0 lb-ft	D-330-10
	2006	4.3L	2516	All	Yes	Yes	Yes	26" - 38"	Yes	Yes	Yes	Economy	Economy	D-330-10
		6.0L	2950 2865	All	Yes	Yes	Yes	26" - 38"	Yes	Yes	No	+23.7 HP	+22.4 lb-ft	D-330-10
		5.3L	2950 2865	All	Yes	Yes	Yes	26" - 38"	Yes	Yes	No	+18.0 HP	+17.0 lb-ft	D-330-10
		4.8L	2950 2865	All	Yes	Yes	Yes	26" - 38"	Yes	Yes	No	+13.1 HP	+16.6 lb-ft	D-330-10
	99-04	6.0L, 5.3L, 4.8L	2516	All	Yes	Yes	Yes	26" - 38"	Yes	Yes	No	Economy	Economy	D-330-10
		6.0L	2950 2865	All	Yes	Yes	Yes	26" - 38"	Yes	Yes	No	+23.7 HP	+22.4 lb-ft	D-330-10
		6.0L	2516	All	Yes	Yes	Yes	26" - 38"	Yes	Yes	N	Economy	Economy	D-330-10
Silverado 1500 HD	99-04	6.0L	2950 2865	All	Yes	Yes	Yes	26" - 38"	Yes	Yes	No	+23.7 HP	+22.4 lb-ft	D-330-10
		6.0L	2516	All	Yes	Yes	Yes	26" - 38"	Yes	Yes	N	Economy	Economy	D-330-10
Silverado 2500, 3500	07-08	6.6L LMM Diesel	2950 2855	No	No	No	No	No	No	No	No	+77.0 HP	+117.0 lb-ft	No Existing Test
	02-07	6.6L LB7, LLY, LBZ Diesel	2950 2855	No	No	No	Yes	26" - 38"	No	No	No	+119.9 HP	+206.4 lb-ft	No Existing Test
		6.6L LB7, LLY, LBZ Diesel	2506	No	No	No	Yes	26" - 38"	No	No	No	Economy	Economy	No Existing Test
	2001	6.6L LB7 Diesel	2950 2855	No	No	No	No	No	No	No	No	+88.9 HP	+141.4 lb-ft	No Existing Test
		6.6L LB7 Diesel	2506	No	No	No	No	No	No	No	No	Economy	Economy	No Existing Test
Silverado 2500 (New Body), 3500 (New Body)	2009	6.0L	2950 2865	Yes	Yes	No	Yes	No	Yes	Yes	Yes	+42.2 HP	+47.9 lb-ft	Pending
	07-08	6.0L	2950 2865	All	Yes	Yes	Yes	No	No	Yes	Yes	+48.0 HP	+54.6 lb-ft	Pending
		6.0L	2516	No	No	No	Yes	No	No	Yes	Yes	Economy	Economy	Pending
Silverado 2500 (Classic Body), 3500 (Classic Body)	05-07	6.0L	2950 2865	All	Yes	Yes	Yes	26" - 38"	Yes	Yes	Yes	+23.7 HP	+22.4 lb-ft	D-330-10
		6.0L	2516	All	Yes	Yes	Yes	26" - 38"	Yes	Yes	Yes	Economy	Economy	D-330-10
Silverado 2500	99-00	7.4L	2950 2865	All	Yes	Yes	Yes	26" - 38"	Yes	Yes	No	+25.0 HP	+33.0 lb-ft	D-330-10
		7.4L	2516	All	Yes	Yes	Yes	26" - 38"	Yes	Yes	No	Economy	Economy	D-330-10
Silverado 2500 HD, 3500 HD	01-07	8.1L	2950 2865	4L80E	Yes	Yes	Yes	26" - 38"	Yes	Yes	N/A 01-05	+32.6 HP	+37.6 lb-ft	D-330-10
		8.1L	2516	4L80E	Yes	Yes	Yes	26" - 38"	Yes	Yes	N/A 01-05	Economy	Economy	D-330-10
		8.1L	2950 2865	Allison	No	No	No	No	No	Yes	N/A 01-05	+32.6 HP	+37.6 lb-ft	D-330-10
		8.1L	2516	Allison	No	No	No	No	No	Yes	N/A 01-05	Economy	Economy	D-330-10
	99-00	7.4L	2950 2865	All	Yes	Yes	Yes	26" - 38"	Yes	Yes	No	+25.0 HP	+33.0 lb-ft	D-330-10
		7.4L	2516	All	Yes	Yes	Yes	26" - 38"	Yes	Yes	No	Economy	Economy	D-330-10
	99-04	6.0L	2950 2865	All	Yes	Yes	Yes	26" - 38"	Yes	Yes	No	+23.7 HP	+22.4 lb-ft	D-330-10
		6.0L	2516	All	Yes	Yes	Yes	26" - 38"	Yes	Yes	No	Economy	Economy	D-330-10
Colorado	08-09	5.3L	2950 2865	All	Yes	Yes	Yes	No	No	Yes	No	+31.2 HP	+33.5 b-ft	D-330-10
C/K Series	99-00	5.7L	2950 2865	All	Yes	Yes	Yes	26" - 38"	Yes	Yes	No	+21.0 HP	+34.0 lb-ft	D-330-10
	99-00	5.0L	2950 2865	All	Yes	Yes	Yes	26" - 38"	Yes	Yes	No	+18.0 HP	+28.0 lb-ft	D-330-10
		5.7L, 5.0L	2516	All	Yes	Yes	Yes	26" - 38"	Yes	Yes	No	Economy	Economy	D-330-10

CHEVROLET CONT.

Make/Model	Year	Engine	Part #	Trans	Shift Points	Shift Firmness	Speed Limiter	Tire	Gear	Rev Limiter	Adjust Fan	HP	TQ	CARB EO
Avalanche	01-07	8.1L	2950 2865	4L80E	Yes	Yes	Yes	26" - 38"	Yes	Yes	N/A 01-05	+32.6 HP	+37.6 lb-ft	D-330-10
		8.1L	2516	4L80E	Yes	Yes	Yes	26" - 38"	Yes	Yes	N/A 01-05	Economy	Economy	D-330-10
		8.1L	2950 2865	Allison	No	No	No	No	No	Yes	N/A 01-05	+32.6 HP	+37.6 lb-ft	D-330-10
		8.1L	2516	Allison	No	No	No	No	No	Yes	N/A 01-05	Economy	Economy	D-330-10
	99-00	7.4L	2950 2865	All	Yes	Yes	Yes	26" - 38"	Yes	Yes	No	+25.0 HP	+33.0 lb-ft	D-330-10
		7.4L	2516	All	Yes	Yes	Yes	26" - 38"	Yes	Yes	No	Economy	Economy	D-330-10
	05-08	6.0L	2950 2865	All	Yes	Yes	Yes	26" - 38"	Yes	Yes	Yes	+25.1 HP	+28.7 lb-ft	D-330-10
	2009	5.3L	2950 2865	Yes	Yes	Yes	Yes	26" - 38"	Yes	Yes	Yes	+25.1 HP	+22.7 lb-ft	D-330-10
	05-08	5.3L	2950 2865	All	Yes	Yes	Yes	26" - 38"	Yes	Yes	Yes	+18.0 HP	+17.0 lb-ft	D-330-10
		6.0L, 5.3L	2516	All	Yes	Yes	Yes	26" - 38"	Yes	Yes	Yes	Economy	Economy	D-330-10
	99-04	6.0L	2950 2865	All	Yes	Yes	Yes	26" - 38"	Yes	Yes	No	+23.7 HP	+22.4 lb-ft	D-330-10
		5.3L	2950 2865	All	Yes	Yes	Yes	26" - 38"	Yes	Yes	No	+18.0 HP	+17.0 lb-ft	D-330-10
		6.0L, 5.3L	2516	All	Yes	Yes	Yes	26" - 38"	Yes	Yes	No	Economy	Economy	D-330-10
Suburban	2009	6.0L	2950 2865	Yes	Yes	No	Yes	No	Yes	Yes	Yes	+42.2 HP	+47.9 lb-ft	D-330-10
	05-08	6.0L	2950 2865	All	Yes	Yes	Yes	26" - 38"	Yes	Yes	Yes	+25.1 HP	+28.7 lb-ft	D-330-10
	2009	5.3L	2950 2865	Yes	Yes	Yes	Yes	26" - 38"	Yes	Yes	Yes	+25.1 HP	+22.7 lb-ft	D-330-10
	05-08	5.3L	2950 2865	All	Yes	Yes	Yes	26" - 38"	Yes	Yes	Yes	+18.0 HP	+17.0 lb-ft	D-330-10
		6.0L, 5.3L	2516	All	Yes	Yes	Yes	26" - 38"	Yes	Yes	Yes	Economy	Economy	D-330-10
	01-07	8.1L	2950 2865	4L80E	Yes	Yes	Yes	26" - 38"	Yes	Yes	N/A 01-05	+32.6 HP	+37.6 lb-ft	D-330-10
		8.1L	2516	4L80E	Yes	Yes	Yes	26" - 38"	Yes	Yes	N/A 01-05	Economy	Economy	D-330-10
		8.1L	2950 2865	Allison	No	No	No	No	No	Yes	N/A 01-05	+32.6 HP	+37.6 lb-ft	D-330-10
		8.1L	2516	Allison	No	No	No	No	No	Yes	N/A 01-05	Economy	Economy	D-330-10
	99-04	6.0L	2950 2865	All	Yes	Yes	Yes	26" - 38"	Yes	Yes	No	+23.7 HP	+22.4 lb-ft	D-330-10
		5.3L	2950 2865	All	Yes	Yes	Yes	26" - 38"	Yes	Yes	No	+18.0 HP	+17.0 lb-ft	D-330-10
		6.0L, 5.3L	2516	All	Yes	Yes	Yes	26" - 38"	Yes	Yes	No	Economy	Economy	D-330-10
	99-00	7.4L	2950 2865	All	Yes	Yes	Yes	26" - 38"	Yes	Yes	No	+25.0 HP	+33.0 lb-ft	D-330-10
		5.7L	2950 2865	All	Yes	Yes	Yes	26" - 38"	Yes	Yes	No	+21.0 HP	+34.0 lb-ft	D-330-10
		7.4L, 5.7L	2516	All	Yes	Yes	Yes	26" - 38"	Yes	Yes	No	Economy	Economy	D-330-10
Tahoe, Tahoe XFE	2009	5.3L	2950 2865	All	Yes	Yes	Yes	26" - 38"	Yes	Yes	Yes	+14.9 HP	+15.4 lb-ft	D-330-10
Tahoe	05-08	5.3L	2950 2865	All	Yes	Yes	Yes	26" - 38"	Yes	Yes	Yes	+18.0 HP	+17.0 lb-ft	D-330-10
	2009	4.8L	2950 2865	All	Yes	Yes	Yes	26" - 38"	Yes	Yes	Yes	+11.2 HP	+11.3 lb-ft	D-330-10
	2008	4.8L	2950 2865	All	Yes	Yes	Yes	26" - 38"	Yes	Yes	Yes	+18.1 HP	+19.2 lb-ft	D-330-10
	2007	4.8L	2950 2865	All	Yes	Yes	Yes	26" - 38"	Yes	Yes	Yes	+13.1 HP	+22.0 lb-ft	D-330-10
	05-06	4.8L	2950 2865	All	Yes	Yes	Yes	26" - 38"	Yes	Yes	Yes	+13.1 HP	+16.6 lb-ft	D-330-10
	05-08	5.3L, 4.8L	2516	All	Yes	Yes	Yes	26" - 38"	Yes	Yes	Yes	Economy	Economy	D-330-10
	99-04	5.3L	2950 2865	All	Yes	Yes	Yes	26" - 38"	Yes	Yes	No	+18.0 HP	+17.0 lb-ft	D-330-10
		4.8L	2950 2865	All	Yes	Yes	Yes	26" - 38"	Yes	Yes	No	+13.1 HP	+16.6 lb-ft	D-330-10
		5.3L, 4.8L	2516	All	Yes	Yes	Yes	26" - 38"	Yes	Yes	No	Economy	Economy	D-330-10
	99-00	5.7L	2950 2865	All	Yes	Yes	Yes	26" - 38"	Yes	Yes	No	+21.0 HP	+34.0 lb-ft	D-330-10
		5.7L	2516	All	Yes	Yes	Yes	26" - 38"	Yes	Yes	No	Economy	Economy	D-330-10

CHEVROLET CONT.

Make/Model	Year	Engine	Part #	Trans	Shift Points	Shift Firmness	Speed Limiter	Tire	Gear	Rev Limiter	Adjust Fan	HP	TQ	CARB EO
SSR	05-06	6.0L	2950 2865	All	Yes	Yes	Yes	No	No	Yes	Yes	+35.0 HP	+35.7 lb-ft	D-330-10
		6.0L	2516	All	Yes	Yes	Yes	No	No	Yes	Yes	Economy	Economy	D-330-10
	03-04	5.3L	2950 2865	All	Yes	Yes	Yes	26" - 38"	Yes	Yes	Yes	+18.7 HP	+32.8 lb-ft	D-330-10
		5.3L	2516	All	Yes	Yes	Yes	26" - 38"	Yes	Yes	Yes	Economy	Economy	D-330-10
Trailblazer SS	06-08	6.0L	2950 2865	All	Yes	Yes	Yes	26" - 38"	Yes	Yes	No	+29.5 HP	+54.8 lb-ft	D-330-10
		6.0L	2516	All	Yes	Yes	Yes	26" - 38"	Yes	Yes	No	Economy	Economy	D-330-10
Trailblazer	03-04	5.3L	2950 2865	All	Yes	Yes	Yes	26" - 38"	Yes	Yes	No	+18.0 HP	+17.0 lb-ft	D-330-10
Camaro SS (Automatic)	2010	6.2L L99	2950 2865	Auto	Yes	No	Yes	No	Yes	Yes	Yes	+21.0 HP	+21.0 lb-ft	D-330-10
Camaro SS (Manual)*	2010	6.2L LS3	2950 2865	Manual	No	No	TBA	No	TBA	TBA	TBA	+19.9 HP	+18.3 lb-ft	D-330-10
Camaro Z28, Camaro SS	99-02	5.7L LS1	2950 2865	All	Yes	Yes	Yes	No	Yes	Yes	Yes	+15.1 HP	+13.6 lb-ft	D-330-10
Corvette Z06	06-08	7.0L LS7	2950 2865	All	No	No	Yes	No	No	Yes	Yes	+23.1 HP	+21.0 lb-ft	D-330-10
	01-04	5.7L LS6	2950 2865	All	Yes	Yes	Yes	No	Yes	Yes	Yes	+11.2 HP	+11.9 lb-ft	D-330-10
Corvette	2006	6.0L LS2	2950 2865	All	No	No	Yes	No	No	Yes	Yes	+11.7 HP	+11.0 lb-ft	D-330-10
Corvette	2005	6.0L LS2	2950 2865	All	Yes	Yes	Yes	No	No	Yes	Yes	+11.7 HP	+11.0 lb-ft	D-330-10
Corvette	99-04	5.7L LS1	2950 2865	All	Yes	Yes	Yes	No	Yes	Yes	Yes	+15.1 HP	+13.6 lb-ft	D-330-10
Impala SS	06-08	5.3L LS4 (FWD)	2950 2865	All	Yes	Yes	Yes	No	No	Yes	No	+14.9 HP	+13.8 lb-ft	D-330-10
Monte Carlo SS	06-07	5.3L LS4 (FWD)	2950 2865	All	Yes	Yes	Yes	No	No	Yes	No	+14.9 HP	+13.8 lb-ft	D-330-10

* Information on advanced features not available at the time of catalog printing. Contact Superchips Customer Care, your local MVP dealer or visit www.superchips.com for current information on features and performance results.

GMC

Make/Model	Year	Engine	Part #	Trans	Shift Points	Shift Firmness	Speed Limiter	Tire	Gear	Rev Limiter	Adjust Fan	HP	TQ	CARB EO
Sierra 1500	05-08	6.0L	2950 2865	All	Yes	Yes	Yes	26" - 38"	Yes	Yes	Yes	+25.1 HP	+28.7 lb-ft	D-330-10
	2009	5.3L	2950 2865	All	Yes	Yes	Yes	26" - 38"	Yes	Yes	Yes	+14.9 HP	+15.4 lb-ft	D-330-10
	05-08	5.3L	2950 2865	All	Yes	Yes	Yes	26" - 38"	Yes	Yes	Yes	+18.0 HP	+17.0 lb-ft	D-330-10
	2009	4.8L	2950 2865	All	Yes	Yes	Yes	26" - 38"	Yes	Yes	Yes	+11.2 HP	+11.3 lb-ft	D-330-10
	2008	4.8L	2950 2865	All	Yes	Yes	Yes	26" - 38"	Yes	Yes	Yes	+18.1 HP	+19.2 lb-ft	D-330-10
	2007	4.8L	2950 2865	All	Yes	Yes	Yes	26" - 38"	Yes	Yes	Yes	+13.1 HP	+22.0 lb-ft	D-330-10
	05-06	4.8L	2950 2865	All	Yes	Yes	Yes	26" - 38"	Yes	Yes	Yes	+13.1 HP	+16.6 lb-ft	D-330-10
		6.0L, 5.3L, 4.8L	2516	All	Yes	Yes	Yes	26" - 38"	Yes	Yes	Yes	Economy	Economy	D-330-10
	2006	4.3L	2950 2865	All	Yes	Yes	Yes	26" - 38"	Yes	Yes	Yes	+19.0 HP	+24.0 lb-ft	D-330-10
		4.3L	2516	All	Yes	Yes	Yes	26" - 38"	Yes	Yes	Yes	Economy	Economy	D-330-10
	99-04	5.3L	2950 2865	All	Yes	Yes	Yes	26" - 38"	Yes	Yes	No	+18.0 HP	+17.0 lb-ft	D-330-10
		4.8L	2950 2865	All	Yes	Yes	Yes	26" - 38"	Yes	Yes	No	+13.1 HP	+16.6 lb-ft	D-330-10
		5.3L, 4.8L	2516	All	Yes	Yes	Yes	26" - 38"	Yes	Yes	No	Economy	Economy	D-330-10
Sierra 1500 HD	05-08	6.0L	2950 2865	All	Yes	Yes	Yes	26" - 38"	Yes	Yes	Yes	+25.1 HP	+28.7 lb-ft	D-330-10
		6.0L	2516	All	Yes	Yes	Yes	26" - 38"	Yes	Yes	Yes	Economy	Economy	D-330-10

GMC CONT.

Make/Model	Year	Engine	Part #	Trans	Shift Points	Shift Firmness	Speed Limiter	Tire	Gear	Rev Limiter	Adjust Fan	HP	TQ	CARB EO
Sierra 2500, 3500	07-08	6.6L LMM Diesel	2950 2855	No	No	No	No	No	No	No	No	+77.0 HP	+117.0 lb-ft	No Existing Test
	02-07	6.6L LB7, LLY, LBZ Diesel	2950 2855	No	No	No	Yes	26" - 38"	No	No	No	+119.9 HP	+206.4 lb-ft	No Existing Test
		6.6L LB7, LLY, LBZ Diesel	2506	No	No	No	Yes	26" - 38"	No	No	No	Economy	Economy	No Existing Test
	2001	6.6L LB7	2950 2855	No	No	No	No	No	No	No	No	+88.9 HP	+141.4 lb-ft	No Existing Test
		6.6L LB7	2506	No	No	No	No	No	No	No	No	Economy	Economy	No Existing Test
Sierra 2500 (New Body), 3500 (New Body)	2009	6.0L	2950 2865	Yes	Yes	No	Yes	No	Yes	Yes	Yes	+42.2 HP	+47.9 lb-ft	Pending
	07-08	6.0L	2950 2865	All	Yes	Yes	Yes	No	No	Yes	Yes	+48.0 HP	+54.6 lb-ft	Pending
		6.0L	2516	No	No	No	Yes	No	No	Yes	Yes	Economy	Economy	Pending
Sierra 2500 (Classic Body), 3500 (Classic Body)	05-07	6.0L	2950 2865	All	Yes	Yes	Yes	26" - 38"	Yes	Yes	Yes	+23.7 HP	+22.4 lb-ft	D-330-10
		6.0L	2516	All	Yes	Yes	Yes	26" - 38"	Yes	Yes	Yes	Economy	Economy	D-330-10
	01-07	8.1L	2950 2865	4L80E	Yes	Yes	Yes	26" - 38"	Yes	Yes	N/A 01-05	+32.6 HP	+37.6 lb-ft	D-330-10
		8.1L	2516	4L80E	Yes	Yes	Yes	26" - 38"	Yes	Yes	N/A 01-05	Economy	Economy	D-330-10
		8.1L	2950 2865	Allison	No	No	No	No	No	Yes	N/A 01-05	+32.6 HP	+37.6 lb-ft	D-330-10
		8.1L	2516	Allison	No	No	No	No	No	Yes	N/A 01-05	Economy	Economy	D-330-10
	99-00	7.4L	2950 2865	All	Yes	Yes	Yes	26" - 38"	Yes	Yes	No	+25.0 HP	+33.0 lb-ft	D-330-10
		7.4L	2516	All	Yes	Yes	Yes	26" - 38"	Yes	Yes	No	Economy	Economy	D-330-10
	99-04	6.0L	2950 2865	All	Yes	Yes	Yes	26" - 38"	Yes	Yes	No	+23.7 HP	+22.4 lb-ft	D-330-10
		6.0L	2516	All	Yes	Yes	Yes	26" - 38"	Yes	Yes	No	Economy	Economy	D-330-10
Canyon	08-09	5.3L	2950 2865	All	Yes	Yes	Yes	No	No	Yes	No	+31.2 HP	+33.5 lb-ft	D-330-10
C/K Series	99-00	5.7L	2950 2865	All	Yes	Yes	Yes	26" - 38"	Yes	Yes	No	+21.0 HP	+34.0 lb-ft	D-330-10
		5.0L	2950 2865	All	Yes	Yes	Yes	26" - 38"	Yes	Yes	No	+18.0 HP	+28.0 lb-ft	D-330-10
		5.7L, 5.0L	2516	All	Yes	Yes	Yes	26" - 38"	Yes	Yes	No	Economy	Economy	D-330-10
Envoy	03-04	5.3L	2950 2865	All	Yes	Yes	Yes	26" - 38"	Yes	Yes	No	+18.0 HP	+17.0 lb-ft	D-330-10
Denali	07-08	6.2L	2950 2865	Yes	Yes	Yes	Yes	26" - 38"	Yes	Yes	Yes	+19.9 HP	+17.1 lb-ft	D-330-10
		6.2L	2516	No	No	No	Yes	26" - 38"	Yes	Yes	Yes	Economy	Economy	D-330-10
Suburban	99-00	7.4L	2950 2865	All	Yes	Yes	Yes	26" - 38"	Yes	Yes	No	+25.0 HP	+33.0 lb-ft	D-330-10
		5.7L	2950 2865	All	Yes	Yes	Yes	26" - 38"	Yes	Yes	No	+21.0 HP	+34.0 lb-ft	D-330-10
		7.4L, 5.7L	2516	All	Yes	Yes	Yes	26" - 38"	Yes	Yes	No	Economy	Economy	D-330-10
Yukon, Yukon XL	2009	5.3L	2950 2865	All	Yes	Yes	Yes	26" - 38"	Yes	Yes	Yes	+14.9 HP	+15.4 lb-ft	D-330-10
	05-08	5.3L	2950 2865	All	Yes	Yes	Yes	26" - 38"	Yes	Yes	Yes	+18.0 HP	+17.0 lb-ft	D-330-10
	2009	4.8L	2950 2865	All	Yes	Yes	Yes	26" - 38"	Yes	Yes	Yes	+11.2 HP	+11.3 lb-ft	D-330-10
	2008	4.8L	2950 2865	All	Yes	Yes	Yes	26" - 38"	Yes	Yes	Yes	+18.1 HP	+19.2 lb-ft	D-330-10
	2007	4.8L	2950 2865	All	Yes	Yes	Yes	26" - 38"	Yes	Yes	Yes	+13.1 HP	+22.0 lb-ft	D-330-10
	05-08	4.8L	2950 2865	All	Yes	Yes	Yes	26" - 38"	Yes	Yes	Yes	+13.1 HP	+16.6 lb-ft	D-330-10
		5.3L, 4.8L	2516	All	Yes	Yes	Yes	26" - 38"	Yes	Yes	Yes	Economy	Economy	D-330-10
		5.3L	2950 2865	All	Yes	Yes	Yes	26" - 38"	Yes	Yes	No	+18.0 HP	+17.0 lb-ft	D-330-10
	99-04	4.8L	2950 2865	All	Yes	Yes	Yes	26" - 38"	Yes	Yes	No	+13.1 HP	+16.6 lb-ft	D-330-10
		5.3L, 4.8L	2516	All	Yes	Yes	Yes	26" - 38"	Yes	Yes	No	Economy	Economy	D-330-10
		5.7L	2950 2865	All	Yes	Yes	Yes	26" - 38"	Yes	Yes	No	+21.0 HP	+34.0 lb-ft	D-330-10
		5.7L	2516	All	Yes	Yes	Yes	26" - 38"	Yes	Yes	No	Economy	Economy	D-330-10
Yukon XL	01-07	8.1L	2950 2865	4L80E	Yes	Yes	Yes	26" - 38"	Yes	Yes	N/A 01-05	+32.6 HP	+37.6 lb-ft	D-330-10
		8.1L	2516	4L80E	Yes	Yes	Yes	26" - 38"	Yes	Yes	N/A 01-05	Economy	Economy	D-330-10
		8.1L	2950 2865	Allison	No	No	No	No	No	Yes	N/A 01-05	+32.6 HP	+37.6 lb-ft	D-330-10
		8.1L	2516	Allison	No	No	No	No	No	Yes	N/A 01-05	Economy	Economy	D-330-10
	99-04	6.0L	2950 2865	All	Yes	Yes	Yes	26" - 38"	Yes	Yes	No	+23.7 HP	+22.4 lb-ft	D-330-10
		5.3L	2950 2865	All	Yes	Yes	Yes	26" - 38"	Yes	Yes	No	+18.0 HP	+17.0 lb-ft	D-330-10
		6.0L, 5.3L	2516	All	Yes	Yes	Yes	26" - 38"	Yes	Yes	No	Economy	Economy	D-330-10
Yukon XL Denali	05-08	6.0L	2950 2865	All	Yes	Yes	Yes	26" - 38"	Yes	Yes	Yes	+25.1 HP	+28.7 lb-ft	D-330-10
		6.0L	2516	All	Yes	Yes	Yes	26" - 38"	Yes	Yes	Yes	Economy	Economy	D-330-10

HUMMER

Make/Model	Year	Engine	Part #	Trans	Shift Points	Shift Firmness	Speed Limiter	Tire	Gear	Rev Limiter	Adjust Fan	HP	TQ	CARB EO
H3 Alpha, H3T Alpha	08-09	5.3L	2950 2865	All	Yes	Yes	Yes	No	No	Yes	No	+31.2 HP	+33.5 lb-ft	D-330-10
		5.3L	2516	All	Yes	Yes	Yes	No	No	Yes	No	Economy	Economy	D-330-10
H2	07-08	6.2L	2950 2865	Yes	Yes	Yes	Yes	26" - 38"	Yes	Yes	Yes	+19.9 HP	+17.1 lb-ft	D-330-10
		6.2L	2516	No	No	No	Yes	26" - 38"	Yes	Yes	Yes	Economy	Economy	D-330-10
	05-07	6.0L	2950 2865	All	Yes	Yes	Yes	26" - 38"	Yes	Yes	Yes	+34.2 HP	+31.4 lb-ft	D-330-10
		6.0L	2516	All	Yes	Yes	Yes	26" - 38"	Yes	Yes	Yes	Economy	Economy	D-330-10
	03-04	6.0L	2950 2865	All	Yes	Yes	Yes	26" - 38"	Yes	Yes	No	+23.7 HP	+22.4 lb-ft	D-330-10
		6.0L	2516	All	Yes	Yes	Yes	26" - 38"	Yes	Yes	No	Economy	Economy	D-330-10

ISUZU

Make/Model	Year	Engine	Part #	Trans	Shift Points	Shift Firmness	Speed Limiter	Tire	Gear	Rev Limiter	Adjust Fan	HP	TQ	CARB EO
Ascender	03-04	5.3L	2950 2865	All	Yes	Yes	Yes	26" - 38"	Yes	Yes	No	+18.0 HP	+17.0 lb-ft	D-330-10
		5.3L	2516	All	Yes	Yes	Yes	26" - 38"	Yes	Yes	No	Economy	Economy	D-330-10

PONTIAC

Make/Model	Year	Engine	Part #	Trans	Shift Points	Shift Firmness	Speed Limiter	Tire	Gear	Rev Limiter	Adjust Fan	HP	TQ	CARB EO
G8 GT	08-09	6.0L	2950 2865	All	Yes	Yes	Yes	No	Yes	Yes	Yes	+15.2 HP	+15.4 lb-ft	D-330-10
Grand Prix GXP	06-08	5.3L LS4 (FWD)	2950 2865	All	Yes	Yes	Yes	No	No	Yes	No	+14.9 HP	+13.8 lb-ft	D-330-10
GTO	05-06	6.0L LS2	2950 2865	All	Yes	Yes	Yes	No	No	Yes	Yes	+20.4 HP	+26.8 lb-ft	D-330-10
		5.7L LS1, LS6	2950 2865	All	Yes	Yes	Yes	No	Yes	Yes	Yes	+23.4 HP	+25.0 lb-ft	D-330-10
Firebird	99-02	5.7L LS1, LS6	2950 2865	All	Yes	Yes	Yes	No	Yes	Yes	Yes	+15.1 HP	+13.6 lb-ft	D-330-10
Trans Am	99-02	5.7L LS1, LS6	2950 2865	All	Yes	Yes	Yes	No	Yes	Yes	Yes	+15.1 HP	+13.6 lb-ft	D-330-10

DODGE

Make/Model	Year	Engine	Part #	Trans	Shift Points	Shift Firmness	Speed Limiter	Tire	Gear	Rev Limiter	Adjust Fan	HP	TQ	CARB EO
Ram	07-09	6.7L Turbo Diesel	3950 3855	All	No	No	No	22.5" - 42"	Not Req.	SC Optimized	No	+115.0 HP	+240.0 lb-ft	No Existing Test
	05-08	5.9L 24v Diesel	3950 3855	All	No	No	SC Optimized	22.5" - 42"	Not Req.	SC Optimized	No	+130.0 HP	+270.0 lb-ft	No Existing Test
		5.9L 24v Diesel	3506	All	No	No	SC Optimized	22.5" - 42"	Not Req.	SC Optimized	No	Economy	Economy	No Existing Test
	03-04	5.9L 250hp Diesel	3950 3855	All	No	No	SC Optimized	22.5" - 42"	Not Req.	SC Optimized	No	+154.0 HP	+318.0 lb-ft	No Existing Test
		5.9L 305hp Diesel	3950 3855	All	No	No	SC Optimized	22.5" - 42"	Not Req.	SC Optimized	No	+115.0 HP	+205.0 lb-ft	No Existing Test
		5.9L 325hp Diesel	3950 3855	All	No	No	SC Optimized	22.5" - 42"	Not Req.	SC Optimized	No	+91.0 HP	+164.0 lb-ft	No Existing Test
		5.9L 250hp, 305hp, 325hp	3506	All	No	No	SC Optimized	22.5" - 42"	Not Req.	SC Optimized	No	Economy	Economy	No Existing Test
	98-02	5.9L 24v Diesel	3950 3855	All	No	No	SC Optimized	22.5" - 42"	Not Req.	SC Optimized	No	+130.0 HP	+270.0 lb-ft	No Existing Test
Ram	2008	4.7L HO	3950 3865	Auto	Yes	SC Optimized	Yes	22.5" - 42"	Yes	Yes	Yes	+48.0 HP	+62.0 lb-ft	D-330-9
	2008	4.7L HO	3516	All	Yes	SC Optimized	Yes	22.5" - 42"	Yes	Yes	Yes	Economy	Economy	D-330-9
	04-07	4.7L HO	3950 3865	All	Yes	SC Optimized	Yes	22.5" - 42"	Not Req.	Yes	No	+30.0 HP	+38.0 lb-ft	D-330-9
	04-07	4.7L	3950 3865	All	Yes	SC Optimized	Yes	22.5" - 42"	Not Req.	Yes	No	+18.0 HP	+20.5 lb-ft	D-330-9
	04-08	5.7L HEMI	3950 3865	All	Yes	SC Optimized	Yes	22.5" - 42"	Not Req.	Yes	No	+17.8 HP	+26.3 lb-ft	D-330-9
		5.7L HEMI	3516	All	Yes	SC Optimized	Yes	22.5" - 42"	Not Req.	Yes	No	Economy	Economy	D-330-9
	2003	5.7L HEMI	3865	All	No	SC Optimized	Yes	22.5" - 42"	Not Req.	Yes	No	+21.4 HP	+34.2 lb-ft	D-330-9
		5.7L HEMI	3516	All	No	SC Optimized	Yes	22.5" - 42"	Not Req.	Yes	No	Economy	Economy	D-330-9
	00-03	4.7L	3865	All	No	SC Optimized	Yes	22.5" - 42"	Not Req.	No	No	+21.9 HP	+19.4 lb-ft	D-330-9
	98-03	5.9L	3865	All	No	No	Yes	22.5" - 42"	Not Req.	Yes	No	+46.9 HP	+59.4 lb-ft	D-330-9
		5.2L	3865	All	No	No	Yes	22.5" - 42"	Not Req.	Yes	No	+18.7 HP	+30.2 lb-ft	D-330-9
		3.9L	3865	All	No	No	Yes	22.5" - 42"	Not Req.	Yes	No	+17.0 HP	+28.0 lb-ft	D-330-9
Dakota	2008	4.7L HO	3950 3865	All	Yes	SC Optimized	Yes	22.5" - 42"	Yes	Yes	No	+48.0 HP	+62.0 lb-ft	D-330-9
	05-07	4.7L HO	3950 3865	All	Yes	No	Yes	22.5" - 42"	No	Yes	No	+30.0 HP	+38.0 lb-ft	D-330-9
	04-07	4.7L	3950 3865	All	Yes	SC Optimized	Yes	22.5" - 42"	Not Req.	Yes	No	+18.0 HP	+20.5 lb-ft	D-330-9
	00-03	4.7L	3865	All	No	SC Optimized	Yes	22.5" - 42"	Not Req.	No	No	+21.9 HP	+19.4 lb-ft	D-330-9
	98-03	5.9L	3865	All	No	SC Optimized	Yes	22.5" - 42"	Not Req.	Yes	No	+46.9 HP	+59.4 lb-ft	D-330-9
		5.2L	3865	All	No	No	Yes	22.5" - 42"	Not Req.	Yes	No	+18.7 HP	+30.2 lb-ft	D-330-9
		3.9L	3865	All	No	No	Yes	22.5" - 42"	Not Req.	Yes	No	+17.0 HP	+28.0 lb-ft	D-330-9
Durango	2008	4.7L HO	3950 3865	All	Yes	SC Optimized	Yes	22.5" - 42"	Yes	Yes	No	+48.0 HP	+62.0 lb-ft	D-330-9
	04-08	5.7L HEMI	3950 3865	All	Yes	SC Optimized	Yes	22.5" - 42"	Not Req.	Yes	No	+17.8 HP	+26.3 lb-ft	D-330-9
	04-07	4.7L HO	3950 3865	All	Yes	SC Optimized	Yes	22.5" - 42"	Not Req.	Yes	No	+30.0 HP	+38.0 lb-ft	D-330-9
		4.7L	3950 3865	All	Yes	SC Optimized	Yes	22.5" - 42"	Not Req.	Yes	No	+18.0 HP	+20.5 lb-ft	D-330-9
	00-03	4.7L	3865	All	No	SC Optimized	Yes	22.5" - 42"	Not Req.	No	No	+21.9 HP	+19.4 lb-ft	D-330-9
	98-03	5.9L	3865	All	No	No	Yes	22.5" - 42"	Not Req.	Yes	No	+46.9 HP	+59.4 lb-ft	D-330-9
		5.2L	3865	All	No	No	Yes	22.5" - 42"	Not Req.	Yes	No	+18.7 HP	+30.2 lb-ft	D-330-9
		3.9L	3865	All	No	No	Yes	22.5" - 42"	Not Req.	Yes	No	+17.0 HP	+28.0 lb-ft	D-330-9
Charger (non AWD)	08-09	3.5L LX	3950 3865	All	Yes	Yes	Yes	17" - 32"	Yes	Yes	Yes	+13.0 HP	+11.0 lb-ft	D-330-9
Charger	05-08	5.7L HEMI	3950 3865	All	Yes	Yes	Yes	17" - 32"	No	Yes	No	+13.0 HP	+14.7 lb-ft	D-330-9
Magnum (non AWD)	2008	3.5L LX	3950 3865	All	Yes	Yes	Yes	17" - 32"	Yes	Yes	Yes	+13.0 HP	+11.0 lb-ft	D-330-9
Magnum	05-08	5.7L HEMI	3950 3865	All	Yes	Yes	Yes	17" - 32"	No	Yes	No	+13.0 HP	+14.7 lb-ft	D-330-9

CHRYSLER

Make/Model	Year	Engine	Part #	Trans	Shift Points	Shift Firmness	Speed Limiter	Tire	Gear	Rev Limiter	Adjust Fan	HP	TQ	CARB EO
300C	05-08	5.7L HEMI	3950 3865	All	Yes	SC Optimized	Yes	17" - 32"	No	Yes	No	+13.0 HP	+14.7 lb-ft	D-330-9
300 (non AWD)	08-09	3.5L LX	3950 3865	All	Yes	Yes	Yes	17" - 32"	Yes	Yes	Yes	+13.0 HP	+11.0 lb-ft	D-330-9
Aspen	04-08	5.7L HEMI	3950 3865	All	Yes	SC Optimized	Yes	22.5" - 42"	Not Req.	Yes	No	+17.8 HP	+26.3 lb-ft	D-330-9
	04-07	4.7L HO	3950 3865	All	Yes	SC Optimized	Yes	22.5" - 42"	Not Req.	Yes	No	+18.0 HP	+20.5 lb-ft	D-330-9

NISSAN

Make/Model	Year	Engine	Part #	Trans	Shift Points	Shift Firmness	Speed Limiter	Tire	Gear	Rev Limiter	Adjust Fan	HP	TQ	CARB EO
Titan	05-10	5.6L	4950 4865	No	No	No	Yes	No	No	Yes	No	+21.13 HP	+27.11 lb-ft	Pending
	2004	5.6L		No	No	No	Yes	No	No	Yes	No	+35.69 HP	+46.19 lb-ft	Pending
Armada	04-10	5.6L	4950 4865	No	No	No	Yes	No	No	Yes	No	+15.72 HP	+20.31 lb-ft	Pending
Frontier	05-10	4.0L	4950 4865	No	No	No	Yes	No	No	Yes	No	+16.93 HP	+20.19 lb-ft	Pending
Pathfinder	05-10	4.0L	4950 4865	No	No	No	Yes	No	No	Yes	No	+16.93 HP	+20.19 lb-ft	Pending
Xterra	05-10	4.0L	4950 4865	No	No	No	Yes	No	No	Yes	No	+16.93 HP	+20.19 lb-ft	Pending

INFINITI

Make/Model	Year	Engine	Part #	Trans	Shift Points	Shift Firmness	Speed Limiter	Tire	Gear	Rev Limiter	Adjust Fan	HP	TQ	CARB EO
QX56	04-10	5.6L	4950 4865	No	No	No	Yes	No	No	Yes	No	+15.72 HP	+20.31 lb-ft	Pending

JEEP

		Grand Cherokee ZJ		Grand Cherokee WJ						Grand Cherokee WK			Commander XK			Wrangler TJ		Wrangler JK	
Series/Engine	4.0L	5.2L	5.9L	4.7L HO		4.7L	4.0L		5.7L HEMI	4.7L	4.7L High Output	5.7L HEMI	4.7L	4.7L High Output	4.0L		3.8L		
Part Number	3875	3875	3875	3875		3875		3875	3875	3875	3875	3875	3875	3875	3875		3875		
CARB EO	D-330-9	D-330-9	D-330-9	D-330-9		D-330-9		D-330-9		D-330-9	D-330-9	D-330-9	D-330-9	D-330-9	D-330-9	D-330-9		D-330-9	
Model(s)	99 - 01 Cherokee XJ	98 Laredo 98 TSI 98 Limited	98 5.9L Limited	99 - 04 Laredo 99 - 04 Limited 02 - 03 Sport 02 - 04 Special Edition 02 - 04 Overland 03 - 04 Columbia Edition	99 - 04 Laredo 99 - 04 Limited 02 - 03 Sport 02 - 04 Special Edition 02 - 04 Overland 03 - 04 Columbia Edition	99 - 04 Laredo 99 - 04 Limited 02 - 03 Sport 02 - 04 Special Edition 02 - 04 Overland 03 - 04 Columbia Edition	05 - 07 Laredo 05 - 08 Limited 05 - 08 Overland 05 - 07 Laredo 05 - 07 Limited 08 Limited	06 - 07 Commander 06 - 07 Commander 08 Commander	98 - 06 X 03 - 06 Sport 97 - 04 Sahara 03 - 06 Rubicon 03 Rubicon Tomb Raider 04 - 06 Unlimited (J for 05)	07 - 09 X 07 - 09 Sahara 07 - 09 Rubicon 07 - 09 Unlimited X 07 - 09 Unlimited Sahara 07 - 09 Unlimited Rubicon									
Stock HP	190 HP	220 HP	245 HP	265 HP		235 HP		195 HP		330 HP	265 HP	305 HP		330 HP	305 HP	305 HP		190 HP	
Stock TQ	225 lb-ft TQ	300 lb-ft TQ	345 lb-ft TQ	330 lb-ft TQ		290 lb-ft TQ		230 lb-ft TQ		375 lb-ft TQ	305 lb-ft TQ	334 lb-ft TQ		375 lb-ft TQ	334 lb-ft TQ	334 lb-ft TQ		225 lb-ft TQ	
SC Perf. HP	+ 24.0 HP	+ 18.7 HP	+ 46.9 HP	+ 21.0 HP		+ 21.1 HP		+ 24.0 HP		+ 17.8 HP	+ 18.0 HP	+ 48.0 HP		+ 17.8 HP	+ 18.0 HP	+ 48.0 HP		+ 24.0 HP	
SC Perf. TQ	+ 28.0 lb-ft TQ	+ 30.2 lb-ft TQ	+ 59.4 lb-ft TQ	+ 20.0 lb-ft TQ		+ 20.3 lb-ft TQ		+ 28.0 lb-ft TQ		+ 26.3 lb-ft TQ	+ 20.5 lb-ft TQ	+ 62.0 lb-ft TQ		+ 26.3 lb-ft TQ	+ 20.5 lb-ft TQ	+ 62.0 lb-ft TQ		+ 28.0 lb-ft TQ	
93 Performance	No	No	No	No		No		No		No	No	No		No	No	Yes		No	
91 Performance	Yes	Yes	Yes	Yes		Yes		Yes		Yes	Yes	Yes		Yes	Yes	Yes		Yes	
87 Performance	Yes	Yes	Yes	Yes		Yes		Yes		Yes	Yes	Yes		Yes	Yes	Yes		Yes	
Towing	Yes	Yes	Yes	Yes		Yes		Yes		Yes	Yes	Yes		Yes	Yes	Yes		Yes	
Crawling Tune	No	No	No	No		No		No		No	No	No		No	No	No		No	
SAVE Calibration	Yes	Yes	Yes	Yes		Yes		Yes		Yes	Yes	Yes		Yes	Yes	Yes		Yes	
Transmission	SC Optimized	SC Optimized	SC Optimized	SC Optimized		SC Optimized		SC Optimized		SC Optimized	SC Optimized	SC Optimized		SC Optimized	SC Optimized	SC Optimized		SC Optimized	
Wide Open Throttle Shift Points	No	No	No	No		No		No		Yes	Yes	Yes		Yes	Yes	Yes		No	
Shift Firmness	SC Optimized	SC Optimized	SC Optimized	SC Optimized		SC Optimized		SC Optimized		SC Optimized	SC Optimized	SC Optimized		SC Optimized	SC Optimized	SC Optimized		SC Optimized	
Adjust Speed Limiter	User Adjusted	User Adjusted	User Adjusted	User Adjusted		User Adjusted		User Adjusted		User Adjusted	User Adjusted	User Adjusted		User Adjusted	User Adjusted	User Adjusted		User Adjusted	
Adjust Rev Limiter	No	No	No	No		No		No		User Adjusted	User Adjusted	User Adjusted		User Adjusted	User Adjusted	User Adjusted		No	
Tire Size Calibration	No	Yes	Yes	Yes		Yes		Yes		Yes	Yes	22.5" - 42"		Yes	Yes	22.5" - 42"		if vehicle equipped	
Transfer Case Gear Calibration	No	No	No	No		No		No		Yes	Yes	Yes		Yes	Yes	Yes		if vehicle equipped	
Axle Gear Calibration	No	No	No	No		No		No		Yes	Yes	Yes		Yes	Yes	Yes		if vehicle equipped	
4WD-Hi Axle Lock	No	No	No	No		No		No		Yes	Yes	Yes		Yes	N/A	N/A		No	
Throttle Body Relearn	No	No	No	No		No		No		Yes				5.7L only		N/A		N/A	
Real Time Idle Up	Yes	Yes	Yes	Yes		Yes		Yes		Yes	Yes	Yes		Yes	Yes	Yes		Yes	
Fan Control	No	No	No	No		No		No		No	No	No		No	No	Yes		No	
Spark Advance Set	Yes	Yes	Yes	Yes		Yes		Yes		No	No	No		No	No	No		if vehicle equipped	
Tire Pressure Monitoring System Threshold Adjust	No	No	No	No		No		No		if vehicle equipped	if vehicle equipped	if vehicle equipped		if vehicle equipped	if vehicle equipped	if vehicle equipped		N/A	
Read & Clear Trouble Codes	Yes	Yes	Yes	Yes		Yes		Yes		Yes	Yes	Yes		Yes	Yes	Yes		Yes	
Multiple Superchips Tunes Included	Yes	Yes	Yes	Yes		Yes		Yes		Yes	Yes	Yes		Yes	Yes	Yes		Yes	
Internet Updateable	Yes	Yes	Yes	Yes		Yes		Yes		Yes	Yes	Yes		Yes	Yes	Yes		Yes	



www.superchips.com



1790 East Airport Blvd • Sanford, FL 32773 • Phone 407.585.7000 • Fax 407.585.1900

